

EHD2 Polyclonal Antibody

Catalog No: #27853



Package Size: #27853-1 50ul #27853-2 100ul

Orders: order@signalwayantibody.com
Support: tech@signalwayantibody.com

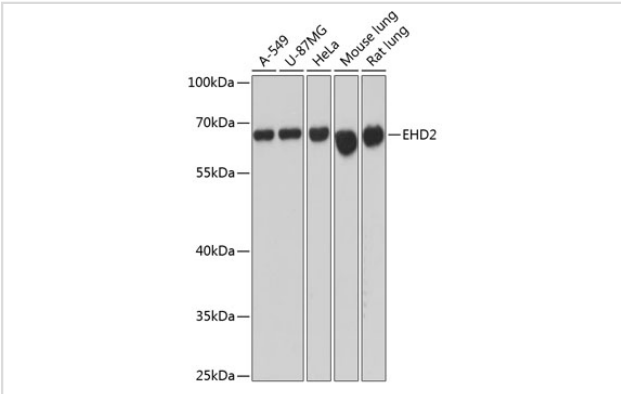
Description

Product Name	EHD2 Polyclonal Antibody
Host Species	Rabbit
Clonality	Polyclonal
Isotype	IgG
Purification	Affinity purification
Applications	WB
Species Reactivity	Hu,Ms,Rt
Immunogen Description	Recombinant fusion protein of human EHD2 (NP_055416.2).
Other Names	EHD2; PAST2; EH domain containing 2
Accession No.	Swiss-Prot#:Q9NZN4NCBI Gene ID:30846
Calculated MW	61kDa
Formulation	Avoid freeze / thaw cycles. Buffer: PBS with 50% glycerol, pH7.4.
Storage	Store at -20°C

Application Details

WB 1:1000 - 1:3000

Images



Western blot analysis of extracts of various cell lines, using EHD2 antibody.

Background

This gene encodes a member of the EH domain-containing protein family. These proteins are characterized by a C-terminal EF-hand domain, a nucleotide-binding consensus site at the N terminus and a bipartite nuclear localization signal. The encoded protein interacts with the actin cytoskeleton through an N-terminal domain and also binds to an EH domain-binding protein through the C-terminal EH domain. This interaction appears to connect clathrin-dependent endocytosis to actin, suggesting that this gene product participates in the endocytic pathway.

Note: This product is for in vitro research use only and is not intended for use in humans or animals.