

OTP Polyclonal Antibody

Catalog No: #27934



Package Size: #27934-1 50ul #27934-2 100ul

Orders: order@signalwayantibody.com

Support: tech@signalwayantibody.com

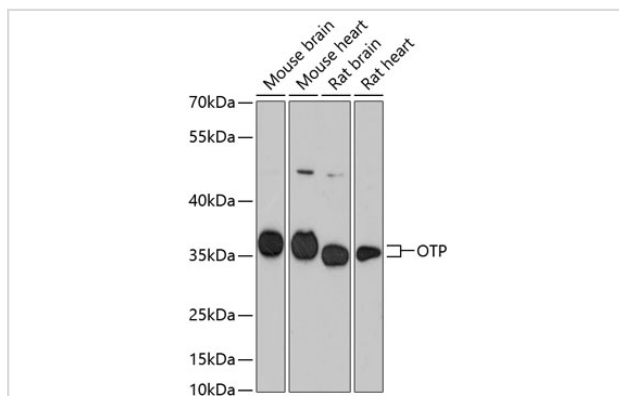
Description

Product Name	OTP Polyclonal Antibody
Host Species	Rabbit
Clonality	Polyclonal
Isotype	IgG
Purification	Affinity purification
Applications	WB,IHC,IF
Species Reactivity	Human,Mouse,Rat
Immunogen Description	Recombinant fusion protein of human OTP (NP_115485.1).
Other Names	OTP; orthopedia homeobox
Accession No.	Swiss-Prot#:Q5XKR4NCBI Gene ID:23440
Calculated MW	34-36kDa
Formulation	Avoid freeze / thaw cycles. Buffer: PBS with 50% glycerol, pH7.4.
Storage	Store at -20°C

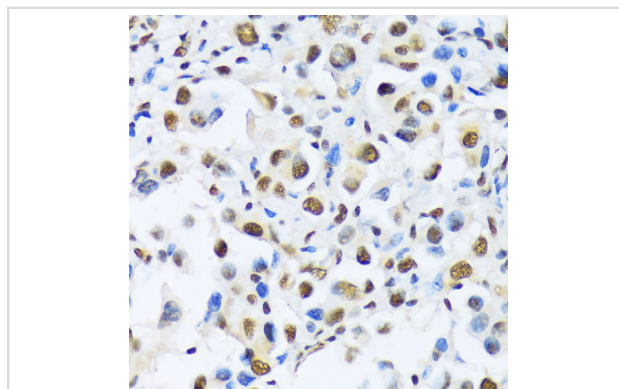
Application Details

WB □ 1:500 - 1:2000 IHC □ 1:50 - 1:200 IF □ 1:50 - 1:100

Images



Western blot analysis of extracts of various cell lines, using OTP antibody at 1:3000 dilution.



Immunohistochemistry of paraffin-embedded human lung cancer using OTP antibody at dilution of 1:100 (40x lens).

Background

This gene encodes a member of the homeodomain (HD) family. HD family proteins are helix-turn-helix transcription factors that play key roles in the specification of cell fates. This protein may function during brain development.

Note: This product is for in vitro research use only and is not intended for use in humans or animals.