

ZC3H10 Polyclonal Antibody

Catalog No: #28335

Package Size: #28335-1 50ul #28335-2 100ul

Orders: order@signalwayantibody.comSupport: tech@signalwayantibody.com

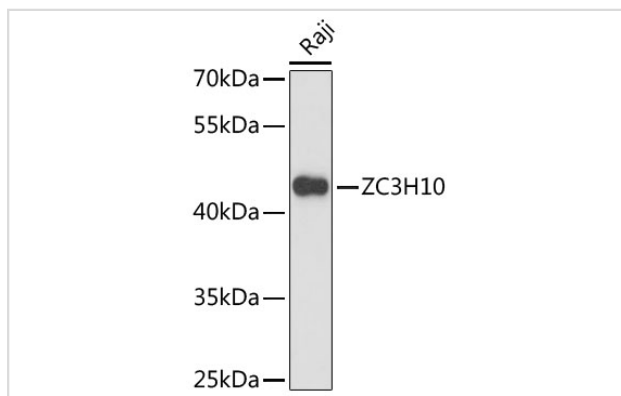
Description

Product Name	ZC3H10 Polyclonal Antibody
Host Species	Rabbit
Clonality	Polyclonal
Isotype	IgG
Purification	Affinity purification
Applications	WB
Species Reactivity	Hu
Immunogen Description	Recombinant fusion protein of human ZC3H10 (NP_116175.1).
Other Names	ZC3H10; ZC3HDC10; zinc finger CCCH-type containing 10
Accession No.	Swiss-Prot#:Q96K80NCBI Gene ID:84872
Calculated MW	46kDa
Formulation	Avoid freeze / thaw cycles. Buffer: PBS with 50% glycerol, pH7.4.
Storage	Store at -20°C

Application Details

WB □ 1:500 - 1:2000

Images



Western blot analysis of extracts of Raji cells, using ZC3H10 antibody.

Background

Note: This product is for in vitro research use only and is not intended for use in humans or animals.