

EDC3 Polyclonal Antibody

Catalog No: #28341

Package Size: #28341-1 50ul #28341-2 100ul

Orders: order@signalwayantibody.comSupport: tech@signalwayantibody.com

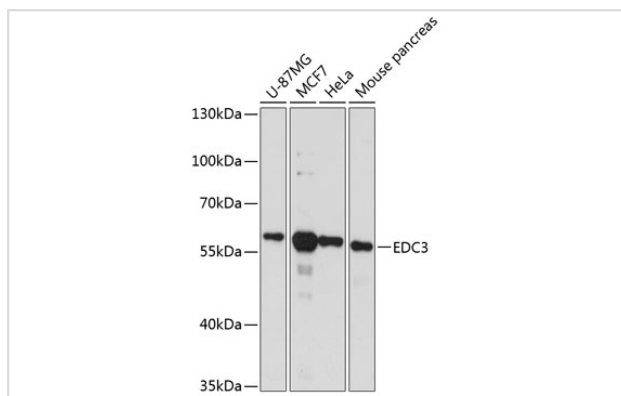
Description

Product Name	EDC3 Polyclonal Antibody
Host Species	Rabbit
Clonality	Polyclonal
Isotype	IgG
Purification	Affinity purification
Applications	WB
Species Reactivity	Human,Mouse,Rat
Immunogen Description	Recombinant fusion protein of human EDC3 (NP_079359.2).
Other Names	EDC3;LSM16;MRT50;YJDC;YJEFN2
Accession No.	Uniprot:Q96F86GeneID:80153
Calculated MW	56kDa
SDS-PAGE MW	56kDa
Formulation	PBS with 0.02% sodium azide,50% glycerol,pH7.3.
Storage	Store at -20°C. Avoid freeze / thaw cycles.

Application Details

WB □ 1:500 - 1:2000

Images



Western blot analysis of extracts of various cell lines, using EDC3 antibody.

Background

EDC3 is associated with an mRNA-decapping complex required for removal of the 5-prime cap from mRNA prior to its degradation from the 5-prime end (Fenger-Gron et al., 2005 [PubMed 16364915]).[supplied by OMIM, Mar 2008]

Note: This product is for in vitro research use only and is not intended for use in humans or animals.