

DLGAP2 Polyclonal Antibody

Catalog No: #28363

Package Size: #28363-1 50ul #28363-2 100ul

Orders: order@signalwayantibody.com

Support: tech@signalwayantibody.com

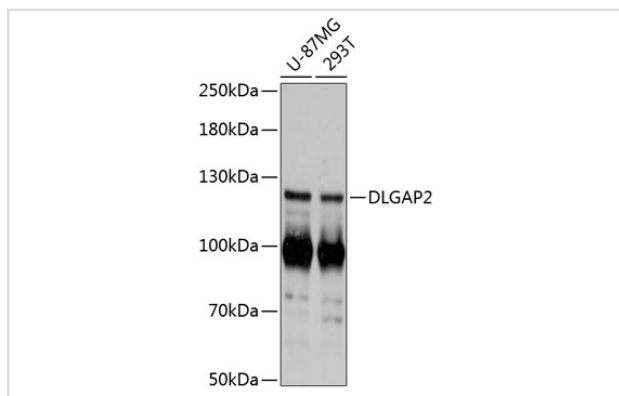
Description

Product Name	DLGAP2 Polyclonal Antibody
Host Species	Rabbit
Clonality	Polyclonal
Isotype	IgG
Purification	Affinity purification
Applications	WB
Species Reactivity	Hu
Immunogen Description	Recombinant fusion protein of human DLGAP2 (NP_004736.2).
Other Names	DLGAP2; C8orf68; DAP2; ERICH1-AS1; SAPAP2; DLG associated protein 2
Accession No.	Swiss-Prot#:Q9P1A6NCBI Gene ID:9228
Calculated MW	117kDa
Formulation	Avoid freeze / thaw cycles. Buffer: PBS with 50% glycerol, pH7.4.
Storage	Store at -20°C

Application Details

WB □ 1:500 - 1:2000

Images



Western blot analysis of extracts of various cell lines, using DLGAP2 antibody.

Background

The product of this gene is a membrane-associated protein that may play a role in synapse organization and signalling in neuronal cells. This gene is biallelically expressed in the brain, however, only the paternal allele is expressed in the testis (PMID:18055845). Alternatively spliced transcript variants encoding different isoforms have been identified.

Note: This product is for in vitro research use only and is not intended for use in humans or animals.