

## DPYSL5 Polyclonal Antibody

Catalog No: #28400

Package Size: #28400-1 50ul #28400-2 100ul

Orders: [order@signalwayantibody.com](mailto:order@signalwayantibody.com)Support: [tech@signalwayantibody.com](mailto:tech@signalwayantibody.com)

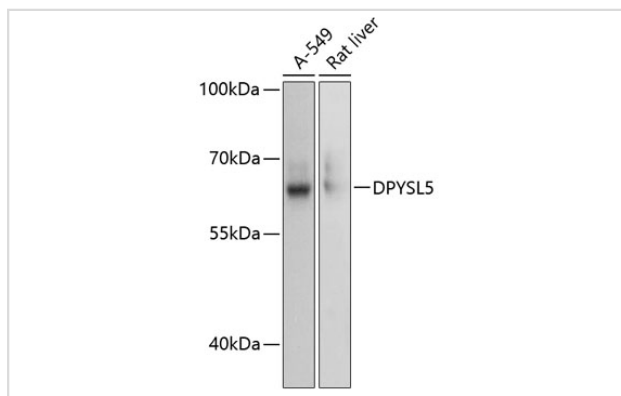
## Description

Product Name	DPYSL5 Polyclonal Antibody
Host Species	Rabbit
Clonality	Polyclonal
Isotype	IgG
Purification	Affinity purification
Applications	WB
Species Reactivity	Hu,Rt
Immunogen Description	Recombinant fusion protein of human DPYSL5 (NP_064519.2).
Other Names	DPYSL5; CRAM; CRMP-5; CRMP5; Ulip6; dihydropyrimidinase like 5
Accession No.	Swiss-Prot#:Q9BPU6NCBI Gene ID:56896
Calculated MW	61kDa
Formulation	Avoid freeze / thaw cycles.   Buffer: PBS with 50% glycerol, pH7.4.
Storage	Store at -20°C

## Application Details

WB □ 1:500 - 1:2000

## Images



Western blot analysis of extracts of various cell lines, using DPYSL5 antibody.

## Background

This gene encodes a member of the CRMP (collapsing response mediator protein) family thought to be involved in neural development. Antibodies to the encoded protein were found in some patients with neurologic symptoms who had paraneoplastic syndrome. A pseudogene of this gene is found on chromosome 11. Multiple alternatively spliced variants, encoding the same protein, have been identified.

---

Note: This product is for in vitro research use only and is not intended for use in humans or animals.