

## ZBP1 Polyclonal Antibody

Catalog No: #28403

Package Size: #28403-1 50ul #28403-2 100ul

Orders: order@signalwayantibody.com

Support: tech@signalwayantibody.com

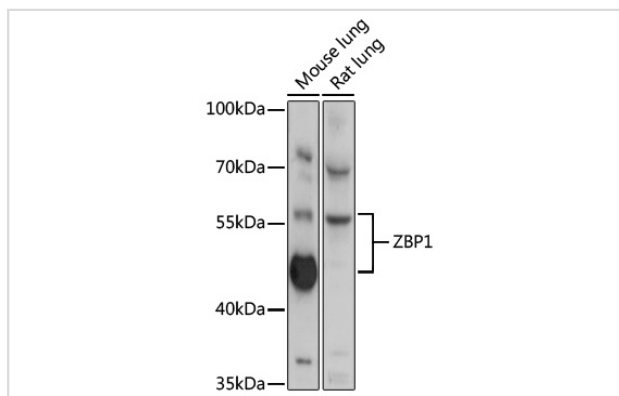
## Description

Product Name	ZBP1 Polyclonal Antibody
Host Species	Rabbit
Clonality	Polyclonal
Isotype	IgG
Purification	Affinity purification
Applications	WB
Species Reactivity	Ms,Rt
Immunogen Description	Recombinant fusion protein of human ZBP1 (NP_110403.2).
Other Names	ZBP1; C20orf183; DAI; DLM-1; DLM1; Z-DNA-binding protein 1
Accession No.	Swiss-Prot#:Q9H171NCBI Gene ID:81030
Calculated MW	46kDa/60kDa
Formulation	Avoid freeze / thaw cycles.   Buffer: PBS with 50% glycerol, pH7.4.
Storage	Store at -20°C

## Application Details

WB □ 1:500 - 1:2000

## Images



Western blot analysis of extracts of various cell line, using ZBP1 antibody.

## Background

This gene encodes a Z-DNA binding protein. The encoded protein plays a role in the innate immune response by binding to foreign DNA and inducing type-I interferon production. Alternatively spliced transcript variants encoding multiple isoforms have been observed for this gene.

Note: This product is for in vitro research use only and is not intended for use in humans or animals.