

## EPHX2 Polyclonal Antibody

Catalog No: #28456

Package Size: #28456-1 50ul #28456-2 100ul

Orders: [order@signalwayantibody.com](mailto:order@signalwayantibody.com)Support: [tech@signalwayantibody.com](mailto:tech@signalwayantibody.com)

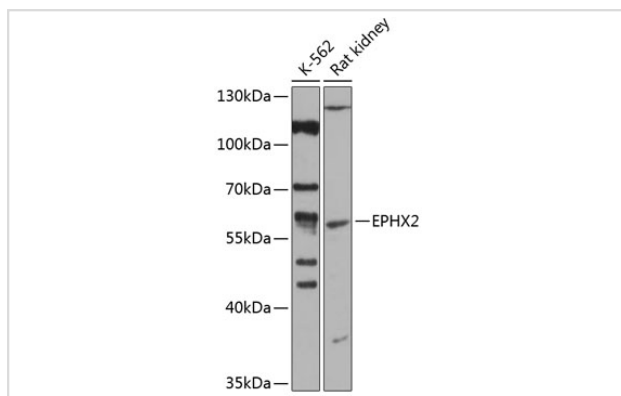
## Description

Product Name	EPHX2 Polyclonal Antibody
Host Species	Rabbit
Clonality	Polyclonal
Isotype	IgG
Purification	Affinity purification
Applications	WB
Species Reactivity	Human,Rat
Immunogen Description	Recombinant fusion protein of human EPHX2 (NP_001970.2).
Other Names	EPHX2;CEH;SEH
Accession No.	Uniprot:P34913GeneID:2053
Calculated MW	63kDa
SDS-PAGE MW	63kDa
Formulation	PBS with 0.02% sodium azide,50% glycerol,pH7.3.
Storage	Store at -20°C. Avoid freeze / thaw cycles.

## Application Details

WB □ 1:500 - 1:1000

## Images



Western blot analysis of extracts of various cell lines, using EPHX2 antibody.

## Background

This gene encodes a member of the epoxide hydrolase family. The protein, found in both the cytosol and peroxisomes, binds to specific epoxides and converts them to the corresponding dihydrodiols. Mutations in this gene have been associated with familial hypercholesterolemia. Alternatively spliced transcript variants have been described.

---

Note: This product is for in vitro research use only and is not intended for use in humans or animals.