

CSMD2 Polyclonal Antibody

Catalog No: #28463



Package Size: #28463-1 50ul #28463-2 100ul

Orders: order@signalwayantibody.com

Support: tech@signalwayantibody.com

Description

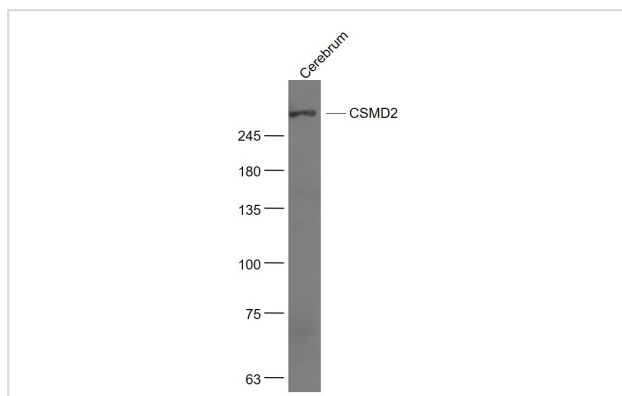
Product Name	CSMD2 Polyclonal Antibody
Host Species	Rabbit
Clonality	Polyclonal
Isotype	IgG
Purification	Affinity purification
Applications	WB IF
Species Reactivity	Hu,Ms,Rt
Immunogen Description	A synthetic peptide of human CSMD2 (NP_443128.2).
Other Names	CSMD2; dJ1007G16.1; dJ1007G16.2; dJ947L8.1; CUB and Sushi multiple domains 2
Accession No.	Swiss-Prot#:Q7Z408NCBI Gene ID:114784
Calculated MW	380kDa
Formulation	Avoid freeze / thaw cycles. Buffer: PBS with 50% glycerol, pH7.4.
Storage	Store at -20°C

Application Details

WB=1:500-2000

IF=1:100-500

Images



Sample:

Cerebrum (Mouse) Lysate at 40 ug

Primary: Anti- CSMD2 at 1/1000 dilution

Background

The protein encoded by this gene is thought to be involved in the control of complement. Defects in this gene have been associated with schizophrenia. This gene may act as a tumor suppressor for colorectal cancer.

Note: This product is for in vitro research use only and is not intended for use in humans or animals.