

DGCR2 Polyclonal Antibody

Catalog No: #28474

Package Size: #28474-1 50ul #28474-2 100ul

Orders: order@signalwayantibody.com

Support: tech@signalwayantibody.com

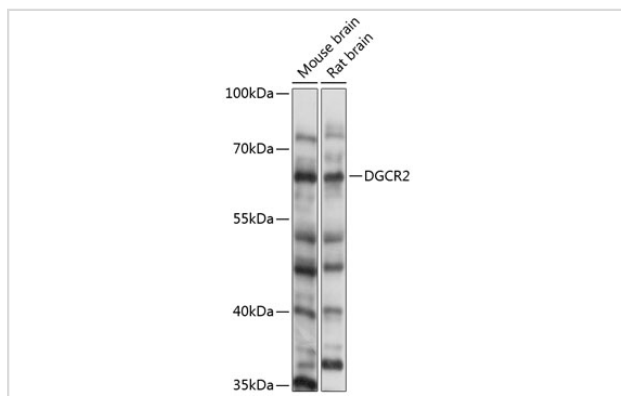
Description

Product Name	DGCR2 Polyclonal Antibody
Host Species	Rabbit
Clonality	Polyclonal
Isotype	IgG
Purification	Affinity purification
Applications	WB
Species Reactivity	Ms,Rt
Immunogen Description	Recombinant fusion protein of human DGCR2 (NP_005128.1).
Other Names	DGCR2; DGS-C; IDD; LAN; SEZ-12; integral membrane protein DGCR2/IDD
Accession No.	Swiss-Prot#:P98153NCBI Gene ID:9993
Calculated MW	61kDa
Formulation	Avoid freeze / thaw cycles. Buffer: PBS with 50% glycerol, pH7.4.
Storage	Store at -20°C

Application Details

WB □ 1:500 - 1:2000

Images



Western blot analysis of extracts of various cell lines, using DGCR2 antibody.

Background

Deletions of the 22q11.2 have been associated with a wide range of developmental defects (notably DiGeorge syndrome, velocardiofacial syndrome, conotruncal anomaly face syndrome and isolated conotruncal cardiac defects) classified under the acronym CATCH 22. The DGCR2 gene encodes a novel putative adhesion receptor protein, which could play a role in neural crest cells migration, a process which has been proposed to be altered in DiGeorge syndrome. Alternative splicing results in multiple transcript variants.

Note: This product is for in vitro research use only and is not intended for use in humans or animals.