

## DCLRE1A Polyclonal Antibody

Catalog No: #28498

Package Size: #28498-1 50ul #28498-2 100ul

Orders: [order@signalwayantibody.com](mailto:order@signalwayantibody.com)Support: [tech@signalwayantibody.com](mailto:tech@signalwayantibody.com)

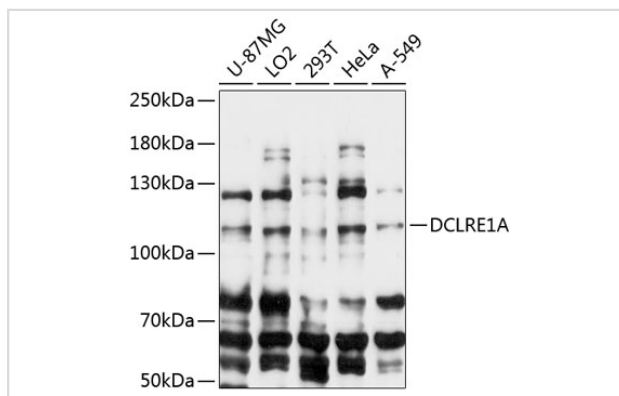
## Description

Product Name	DCLRE1A Polyclonal Antibody
Host Species	Rabbit
Clonality	Polyclonal
Isotype	IgG
Purification	Affinity purification
Applications	WB
Species Reactivity	Hu
Immunogen Description	Recombinant fusion protein of human DCLRE1A (NP_001258745.1).
Other Names	DCLRE1A; PSO2; SNM1; SNM1A; DNA cross-link repair 1A
Accession No.	Swiss-Prot#:Q6PJP8NCBI Gene ID:9937
Calculated MW	116kDa
Formulation	Avoid freeze / thaw cycles.   Buffer: PBS with 50% glycerol, pH7.4.
Storage	Store at -20°C

## Application Details

WB □ 1:500 - 1:2000

## Images



Western blot analysis of extracts of various cell lines, using DCLRE1A antibody.

## Background

This gene encodes a conserved protein that is involved in the repair of DNA interstrand cross-links. DNA cross-links suppress transcription, replication, and DNA segregation. The encoded protein is a regulator of the mitotic cell cycle checkpoint. Alternative splicing results in multiple transcript variants.

Note: This product is for in vitro research use only and is not intended for use in humans or animals.