

OMA1 Polyclonal Antibody

Catalog No: #28574

Package Size: #28574-1 50ul #28574-2 100ul

Orders: order@signalwayantibody.comSupport: tech@signalwayantibody.com

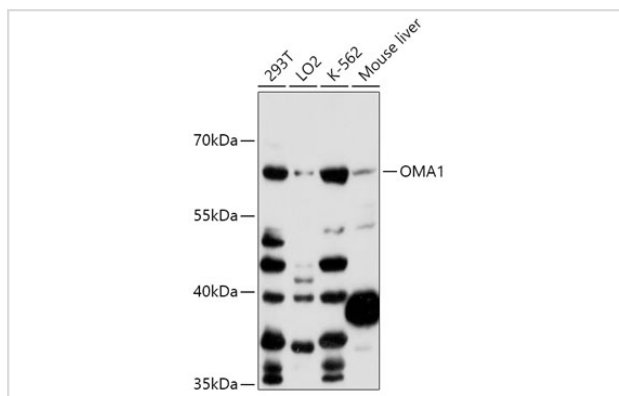
Description

Product Name	OMA1 Polyclonal Antibody
Host Species	Rabbit
Clonality	Polyclonal
Isotype	IgG
Purification	Affinity purification
Applications	WB
Species Reactivity	Human,Mouse
Immunogen Description	Recombinant fusion protein of human OMA1 (NP_660286.1).
Other Names	OMA1; 2010001O09Rik; DAB1; MPRP-1; MPRP1; YKR087C; ZMPOMA1; peptidase; OMA1 zinc metallopeptidase
Accession No.	Swiss-Prot#:Q96E52NCBI Gene ID:115209
Calculated MW	60kDa
Formulation	Avoid freeze / thaw cycles. Buffer: PBS with 50% glycerol, pH7.4.
Storage	Store at -20°C

Application Details

WB □ 1:500 - 1:2000

Images



Western blot analysis of extracts of various cell lines, using OMA1 antibody at 1:1000 dilution.

Background

Note: This product is for in vitro research use only and is not intended for use in humans or animals.