

## ZNF641 Polyclonal Antibody

Catalog No: #28575

Package Size: #28575-1 50ul #28575-2 100ul

Orders: [order@signalwayantibody.com](mailto:order@signalwayantibody.com)Support: [tech@signalwayantibody.com](mailto:tech@signalwayantibody.com)

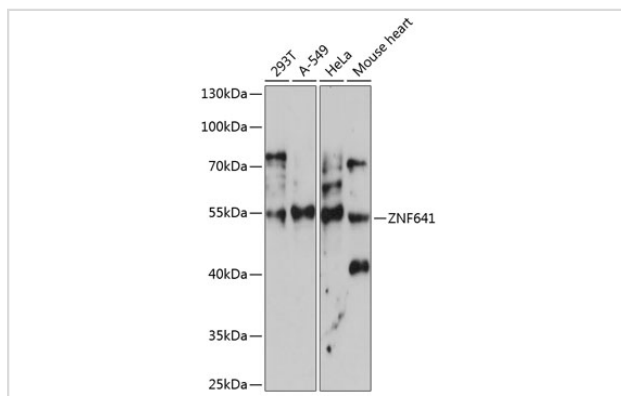
## Description

Product Name	ZNF641 Polyclonal Antibody
Host Species	Rabbit
Clonality	Polyclonal
Isotype	IgG
Purification	Affinity purification
Applications	WB
Species Reactivity	Hu,Ms
Immunogen Description	Recombinant fusion protein of human ZNF641 (NP_689533.2).
Other Names	ZNF641; zinc finger protein 641
Accession No.	Swiss-Prot#:Q96N77NCBI Gene ID:121274
Calculated MW	49kDa
Formulation	Avoid freeze / thaw cycles.   Buffer: PBS with 50% glycerol, pH7.4.
Storage	Store at -20°C

## Application Details

WB □ 1:500 - 1:2000

## Images



Western blot analysis of extracts of various cell lines, using ZNF641 antibody.

## Background

Note: This product is for in vitro research use only and is not intended for use in humans or animals.