

TRH Polyclonal Antibody

Catalog No: #28599



Package Size: #28599-1 50ul #28599-2 100ul

Orders: order@signalwayantibody.com

Support: tech@signalwayantibody.com

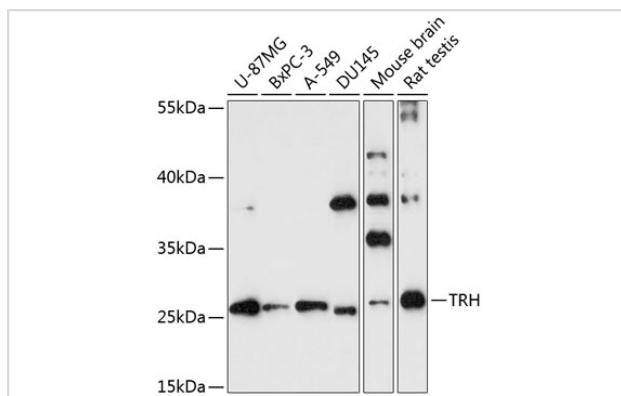
Description

Product Name	TRH Polyclonal Antibody
Host Species	Rabbit
Clonality	Polyclonal
Isotype	IgG
Purification	Affinity purification
Applications	WB,IF
Species Reactivity	Human,Mouse,Rat
Immunogen Description	A synthetic peptide of human TRH (NP_009048.1).
Other Names	TRH;Pro-TRH;TRF
Accession No.	Uniprot:P20396GeneID:7200
Calculated MW	27kDa
SDS-PAGE MW	27kDa
Formulation	PBS with 0.02% sodium azide,50% glycerol,pH7.3.
Storage	Store at -20°C. Avoid freeze / thaw cycles.

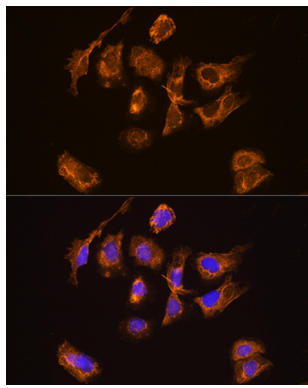
Application Details

WB □ 1:500 - 1:2000 IF □ 1:50 - 1:200

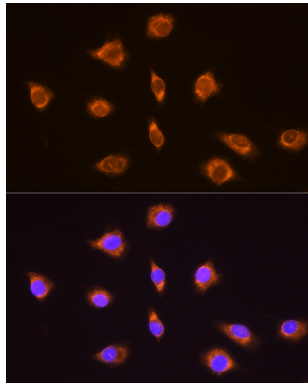
Images



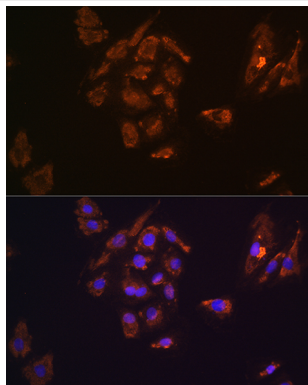
Western blot analysis of extracts of various cell lines, using TRH antibody.



Immunofluorescence analysis of U2OS cells using TRH Rabbit pAb.



Immunofluorescence analysis of L929 cells using TRH Rabbit pAb.



Immunofluorescence analysis of H9C2 cells using TRH Rabbit pAb.

Background

This gene encodes a member of the thyrotropin-releasing hormone family. Cleavage of the encoded proprotein releases mature thyrotropin-releasing hormone, which is a tripeptide hypothalamic regulatory hormone. The human proprotein contains six thyrotropin-releasing hormone tripeptides. Thyrotropin-releasing hormone is involved in the regulation and release of thyroid-stimulating hormone, as well as prolactin. Deficiency of this hormone has been associated with hypothalamic hypothyroidism.

Note: This product is for in vitro research use only and is not intended for use in humans or animals.