

## SLC47A1 Polyclonal Antibody

Catalog No: #28622

Package Size: #28622-1 50ul #28622-2 100ul

Orders: order@signalwayantibody.com

Support: tech@signalwayantibody.com

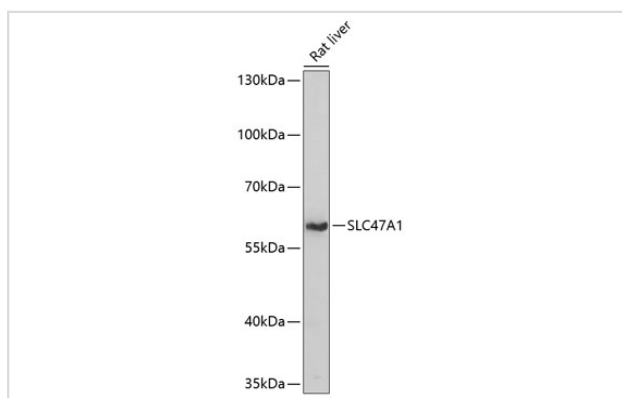
## Description

Product Name	SLC47A1 Polyclonal Antibody
Host Species	Rabbit
Clonality	Polyclonal
Isotype	IgG
Purification	Affinity purification
Applications	WB
Species Reactivity	Hu,Rt
Immunogen Description	Recombinant fusion protein of human SLC47A1 (NP_060712.2).
Other Names	SLC47A1; MATE1; solute carrier family 47 member 1
Accession No.	Swiss-Prot#:Q96FL8NCBI Gene ID:55244
Calculated MW	62kDa
Formulation	Avoid freeze / thaw cycles. Buffer: PBS with 50% glycerol, pH7.4.
Storage	Store at -20°C

## Application Details

WB □ 1:500 - 1:1000

## Images



Western blot analysis of extracts of rat liver, using SLC47A1 antibody.

## Background

This gene is located within the Smith-Magenis syndrome region on chromosome 17. It encodes a protein of unknown function.

## Published Papers

el at., A Newly Established Cuproptosis-Related Gene Signature for Predicting Prognosis and Immune Infiltration in Uveal Melanoma | Int J Mol Sci | 2023 Jul 12 | by Wei Huang, Fan Yang et al. PMID: 37511120, (2023)

---

Note: This product is for in vitro research use only and is not intended for use in humans or animals.