

ECHDC2 Polyclonal Antibody

Catalog No: #28636

Package Size: #28636-1 50ul #28636-2 100ul

Orders: order@signalwayantibody.comSupport: tech@signalwayantibody.com

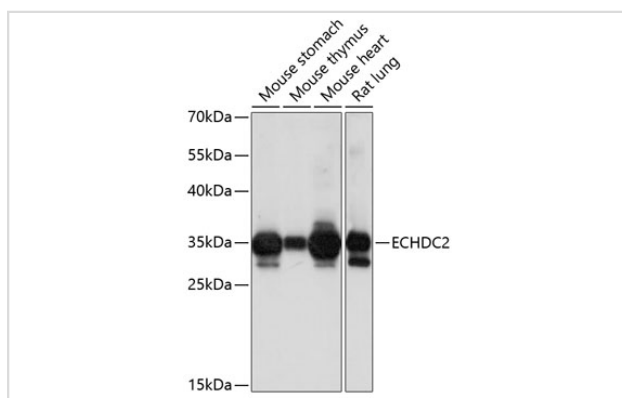
Description

Product Name	ECHDC2 Polyclonal Antibody
Host Species	Rabbit
Clonality	Polyclonal
Isotype	IgG
Purification	Affinity purification
Applications	WB
Species Reactivity	Ms,Rt
Immunogen Description	Recombinant fusion protein of human ECHDC2 (NP_001185890.1).
Other Names	ECHDC2; enoyl-CoA hydratase domain containing 2
Accession No.	Swiss-Prot#:Q86YB7NCBI Gene ID:55268
Calculated MW	31kDa
Formulation	Avoid freeze / thaw cycles. Buffer: PBS with 50% glycerol, pH7.4.
Storage	Store at -20°C

Application Details

WB □ 1:500 - 1:2000

Images



Western blot analysis of extracts of various cell lines, using ECHDC2 antibody.

Background

Note: This product is for in vitro research use only and is not intended for use in humans or animals.