

EPS8 Polyclonal Antibody

Catalog No: #28687

Package Size: #28687-1 50ul #28687-2 100ul

Orders: order@signalwayantibody.comSupport: tech@signalwayantibody.com

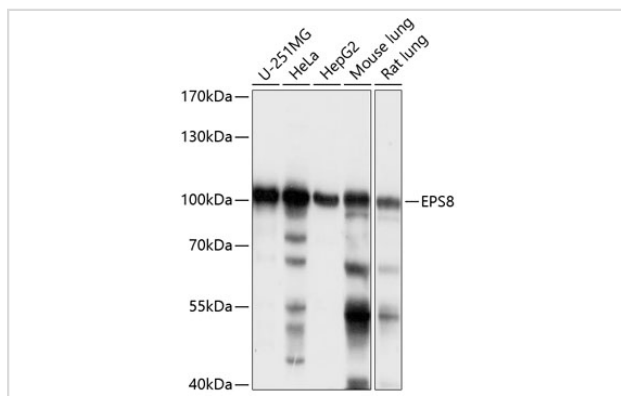
Description

Product Name	EPS8 Polyclonal Antibody
Host Species	Rabbit
Clonality	Polyclonal
Isotype	IgG
Purification	Affinity purification
Applications	WB
Species Reactivity	Hu,Ms,Rt
Immunogen Description	Recombinant fusion protein of human EPS8 (NP_004438.3).
Other Names	EPS8; DFNB102; epidermal growth factor receptor kinase substrate 8
Accession No.	Swiss-Prot#:Q12929NCBI Gene ID:2059
Calculated MW	100kDa
Formulation	Avoid freeze / thaw cycles. Buffer: PBS with 50% glycerol, pH7.4.
Storage	Store at -20°C

Application Details

WB □ 1:500 - 1:2000

Images



Western blot analysis of extracts of various cell lines, using EPS8 antibody.

Background

This gene encodes a member of the EPS8 family. This protein contains one PH domain and one SH3 domain. It functions as part of the EGFR pathway, though its exact role has not been determined. Highly similar proteins in other organisms are involved in the transduction of signals from Ras to Rac and growth factor-mediated actin remodeling. Alternate transcriptional splice variants of this gene have been observed but have not been thoroughly characterized.

Note: This product is for in vitro research use only and is not intended for use in humans or animals.