

ERLIN1 Polyclonal Antibody

Catalog No: #28725

Package Size: #28725-1 50ul #28725-2 100ul

Orders: order@signalwayantibody.com

Support: tech@signalwayantibody.com

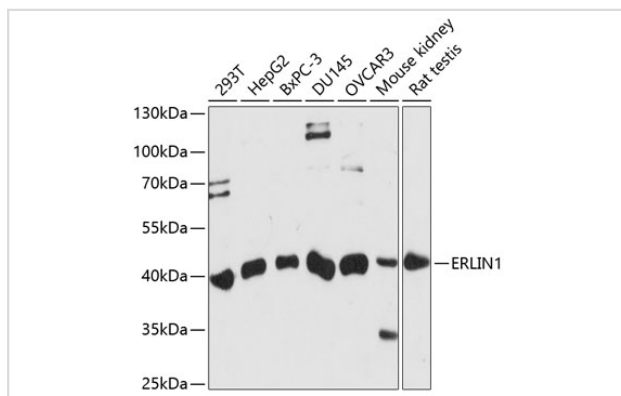
Description

Product Name	ERLIN1 Polyclonal Antibody
Host Species	Rabbit
Clonality	Polyclonal
Isotype	IgG
Purification	Affinity purification
Applications	WB,IHC
Species Reactivity	Hu,Ms,Rt
Immunogen Description	Recombinant fusion protein of human ERLIN1 (NP_006450.2).
Other Names	ERLIN1; C10orf69; Erlin-1; KE04; KEO4; SPFH1; SPG62; erlin-1
Accession No.	Swiss-Prot#:O75477NCBI Gene ID:10613
Calculated MW	39kDa
Formulation	Avoid freeze / thaw cycles. Buffer: PBS with 50% glycerol, pH7.4.
Storage	Store at -20°C

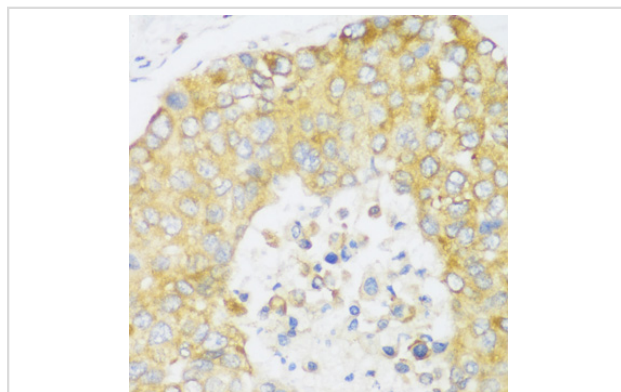
Application Details

WB 1:500 - 1:2000 IHC 1:50 - 1:200

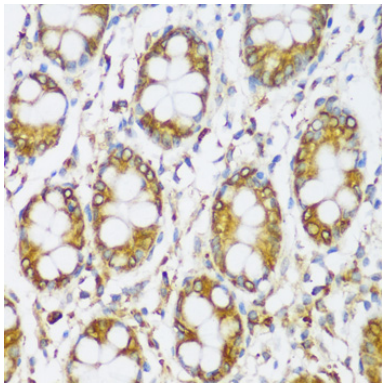
Images



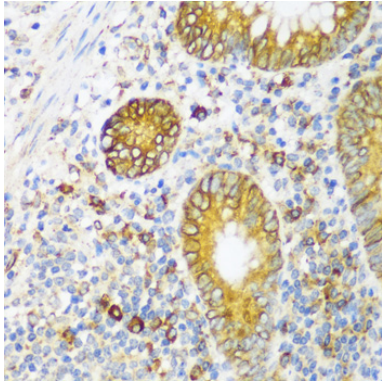
Western blot analysis of extracts of various cell lines, using ERLIN1 antibody.



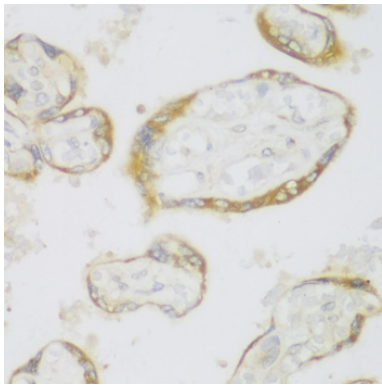
Immunohistochemistry of paraffin-embedded human appendix using ERLIN1 antibody.



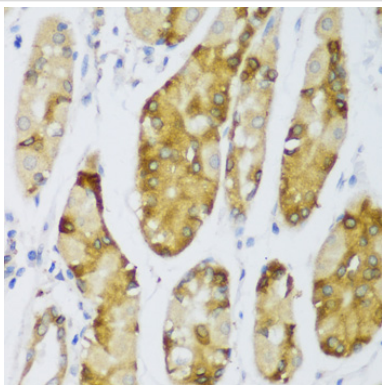
Immunohistochemistry of paraffin-embedded human colon using ERLIN1 antibody.



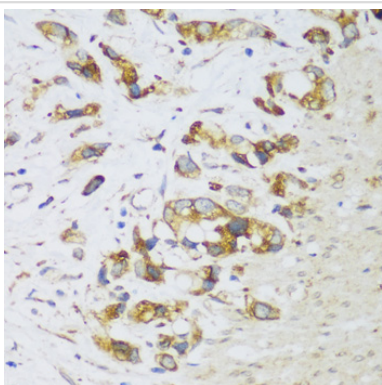
Immunohistochemistry of paraffin-embedded human gastric cancer using ERLIN1 antibody.



Immunohistochemistry of paraffin-embedded human liver cancer using ERLIN1 antibody.



Immunohistochemistry of paraffin-embedded human placenta using ERLIN1 antibody.



Immunohistochemistry of paraffin-embedded human stomach using ERLIN1 antibody.

Background

The protein encoded by this gene is part of a protein complex that mediates degradation of inositol 1,4,5-trisphosphate receptors in the endoplasmic reticulum. The encoded protein also binds cholesterol and regulates the SREBP signaling pathway, which promotes cellular cholesterol homeostasis. Defects in this gene have been associated with spastic paraplegia 62.

Note: This product is for in vitro research use only and is not intended for use in humans or animals.