

EFHD2 Polyclonal Antibody

Catalog No: #28762



Package Size: #28762-1 50ul #28762-2 100ul

Orders: order@signalwayantibody.comSupport: tech@signalwayantibody.com

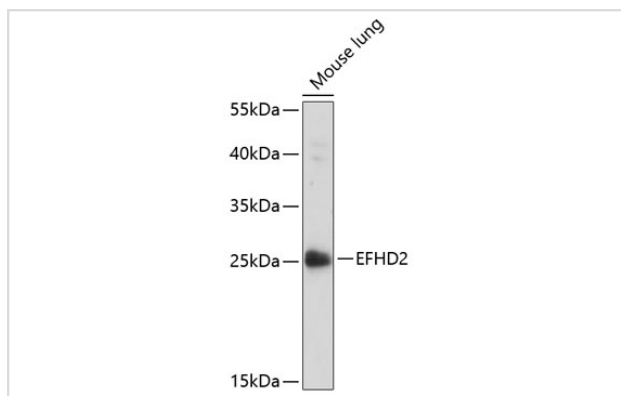
Description

Product Name	EFHD2 Polyclonal Antibody
Host Species	Rabbit
Clonality	Polyclonal
Isotype	IgG
Purification	Affinity purification
Applications	WB
Species Reactivity	Human,Mouse
Immunogen Description	Recombinant fusion protein of human EFHD2 (NP_077305.2).
Other Names	EFHD2;SWS1
Accession No.	Uniprot:Q96C19GeneID:79180
Calculated MW	27kDa
SDS-PAGE MW	27kDa
Formulation	PBS with 0.02% sodium azide,50% glycerol,pH7.3.
Storage	Store at -20°C. Avoid freeze / thaw cycles.

Application Details

WB □ 1:500 - 1:2000

Images



Western blot analysis of extracts of mouse lung, using EFHD2 antibody.

Background

May regulate B-cell receptor (BCR)-induced immature and primary B-cell apoptosis. Plays a role as negative regulator of the canonical NF-kappa-B-activating branch. Controls spontaneous apoptosis through the regulation of BCL2L1 abundance.

Note: This product is for in vitro research use only and is not intended for use in humans or animals.