

EIF4ENIF1 Polyclonal Antibody

Catalog No: #28857

Package Size: #28857-1 50ul #28857-2 100ul

Orders: order@signalwayantibody.comSupport: tech@signalwayantibody.com

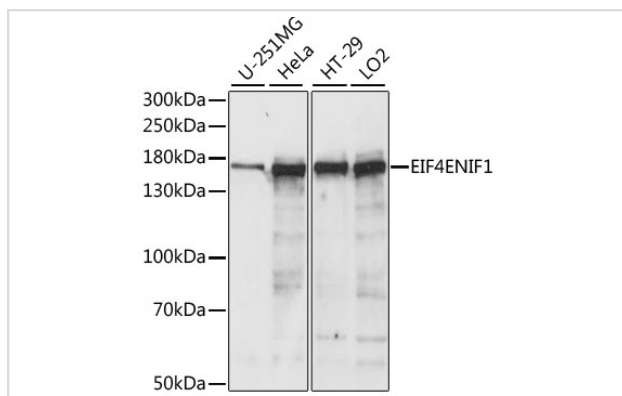
Description

Product Name	EIF4ENIF1 Polyclonal Antibody
Host Species	Rabbit
Clonality	Polyclonal
Isotype	IgG
Purification	Affinity purification
Applications	WB,IF
Species Reactivity	Human,Mouse,Rat
Immunogen Description	A synthetic peptide of human EIF4ENIF1 (NP_001157973.1).
Other Names	EIF4ENIF1;4E-T;Clast4
Accession No.	Uniprot:Q9NRA8GeneID:56478
Calculated MW	178kDa
SDS-PAGE MW	178kDa
Formulation	PBS with 0.02% sodium azide,50% glycerol,pH7.3.
Storage	Store at -20°C. Avoid freeze / thaw cycles.

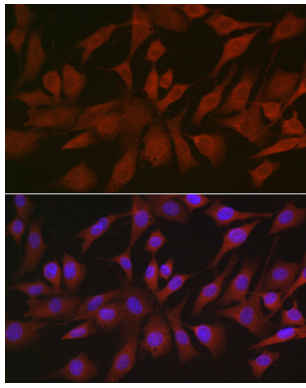
Application Details

WB □ 1:500 - 1:2000 IF □ 1:50 - 1:200

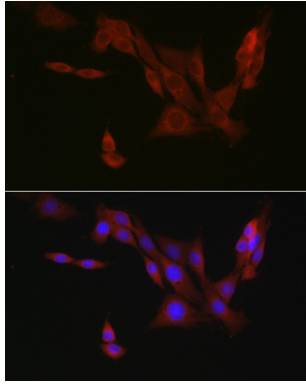
Images



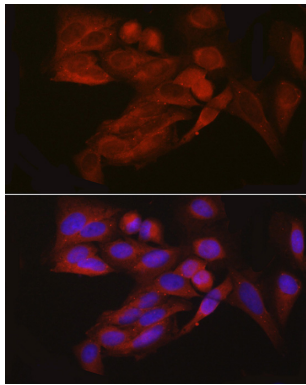
Western blot analysis of extracts of various cell lines, using EIF4ENIF1 antibody.



Immunofluorescence analysis of NIH/3T3 cells using EIF4ENIF1 Rabbit pAb.



Immunofluorescence analysis of PC-12 cells using EIF4ENIF1 Rabbit pAb.



Immunofluorescence analysis of U2OS cells using EIF4ENIF1 Rabbit pAb.

Background

The protein encoded by this gene is a nucleocytoplasmic shuttle protein for the translation initiation factor eIF4E. This shuttle protein interacts with the importin alpha-beta complex to mediate nuclear import of eIF4E. It is predominantly cytoplasmic; its own nuclear import is regulated by a nuclear localization signal and nuclear export signals. Multiple transcript variants encoding different isoforms have been found for this gene.

Note: This product is for in vitro research use only and is not intended for use in humans or animals.