

## ZNF408 Polyclonal Antibody

Catalog No: #28862

Package Size: #28862-1 50ul #28862-2 100ul

Orders: [order@signalwayantibody.com](mailto:order@signalwayantibody.com)Support: [tech@signalwayantibody.com](mailto:tech@signalwayantibody.com)

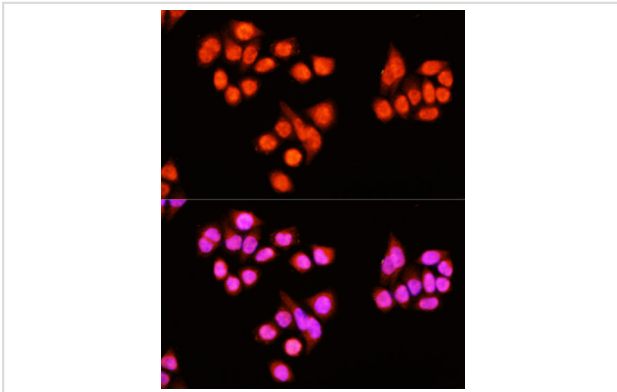
## Description

|                       |   |
|-----------------------|---|
| Product Name          | ZNF408 Polyclonal Antibody  |
| Host Species          | Rabbit  |
| Clonality             | Polyclonal  |
| Isotype               | IgG   |
| Purification          | Affinity purification   |
| Applications          | WB,IF   |
| Species Reactivity    | Hu  |
| Immunogen Description | Recombinant fusion protein of human ZNF408 (NP_079017.1).           |
| Other Names           | ZNF408; EVR6; RP72; zinc finger protein 408                         |
| Accession No.         | Swiss-Prot#:Q9H9D4NCBI Gene ID:79797                                |
| Calculated MW         | Refer to figures  |
| Formulation           | Avoid freeze / thaw cycles.   Buffer: PBS with 50% glycerol, pH7.4. |
| Storage               | Store at -20°C  |

## Application Details

WB □ 1:500 - 1:2000 IF □ 1:50 - 1:200

## Images



Immunofluorescence analysis of HeLa cells using ZNF408 antibody.

## Background

The protein encoded by this gene contains ten tandem zinc fingers and an N-terminal SET domain, so it is likely a DNA binding protein that interacts with other proteins. In adults, the encoded protein is expressed most highly in retina. Consequently, defects in this gene have been associated with familial exudative vitreoretinopathy (FEVR) and retinitis pigmentosa (RP).

---

Note: This product is for in vitro research use only and is not intended for use in humans or animals.