

TCIRG1 Polyclonal Antibody

Catalog No: #28940



Package Size: #28940-1 50ul #28940-2 100ul

Orders: order@signalwayantibody.com

Support: tech@signalwayantibody.com

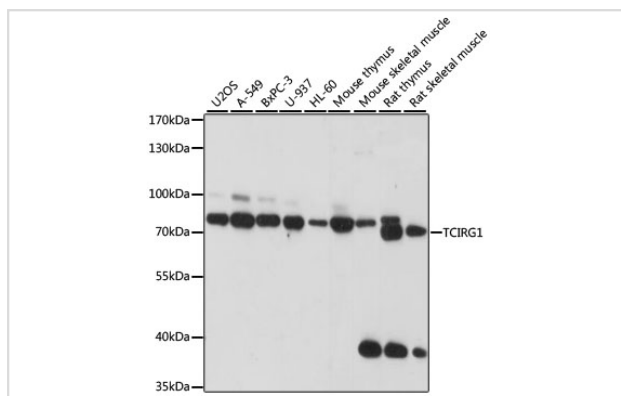
Description

Product Name	TCIRG1 Polyclonal Antibody
Host Species	Rabbit
Clonality	Polyclonal
Isotype	IgG
Purification	Affinity purification
Applications	WB,IHC,IF
Species Reactivity	Human,Mouse,Rat
Immunogen Description	Recombinant fusion protein of human TCIRG1 (NP_006010.2).
Other Names	TCIRG1;ATP6N1C;ATP6V0A3;Atp6i;OC-116kDa;OC116;OPTB1;Stv1;TIRC7;Vph1;a3
Accession No.	Uniprot:Q13488GeneID:10312
Calculated MW	93kDa
SDS-PAGE MW	93kDa
Formulation	PBS with 0.02% sodium azide,50% glycerol,pH7.3.
Storage	Store at -20°C. Avoid freeze / thaw cycles.

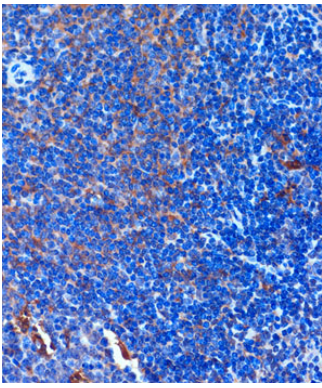
Application Details

WB □ 1:200 - 1:2000 IHC □ 1:50 - 1:200 IF □ 1:50 - 1:200

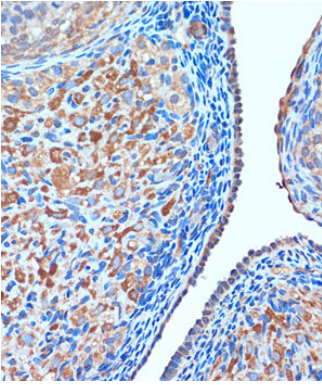
Images



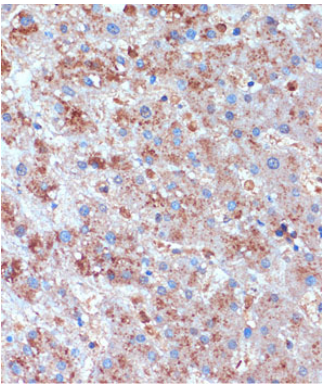
Western blot analysis of extracts of various cell lines, using TCIRG1 antibody.



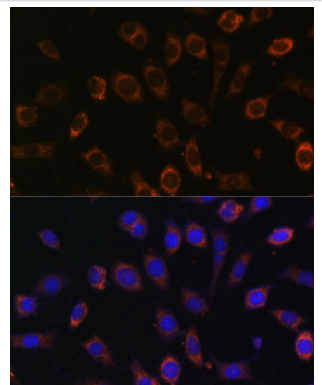
Immunohistochemistry of paraffin-embedded Mouse spleen using TCIRG1 Rabbit pAb.



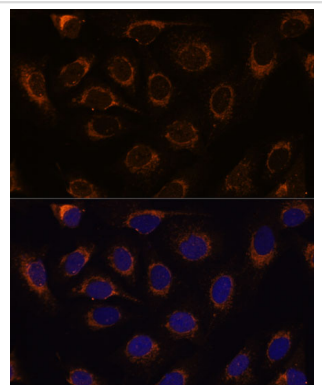
Immunohistochemistry of paraffin-embedded Rat ovary using TCIRG1 Rabbit pAb.



Immunohistochemistry of paraffin-embedded Human liver using TCIRG1 Rabbit pAb.



Immunofluorescence analysis of L929 cells using TCIRG1 Polyclonal Antibody.



Immunofluorescence analysis of U-2 OS cells using TCIRG1 Polyclonal Antibody.

Background

This gene encodes a subunit of a large protein complex known as a vacuolar H⁺-ATPase (V-ATPase). The protein complex acts as a pump to move protons across the membrane. This movement of protons helps regulate the pH of cells and their surrounding environment. V-ATPase dependent organelle acidification is necessary for such intracellular processes as protein sorting, zymogen activation, and receptor-mediated endocytosis. V-ATPase is comprised of a cytosolic V1 domain and a transmembrane V0 domain. Alternative splicing results in multiple transcript variants. Mutations in this gene are associated with infantile malignant osteopetrosis.

Note: This product is for in vitro research use only and is not intended for use in humans or animals.