

TRAPPC6B Polyclonal Antibody

Catalog No: #29341



Package Size: #29341-1 50ul #29341-2 100ul

Orders: order@signalwayantibody.com

Support: tech@signalwayantibody.com

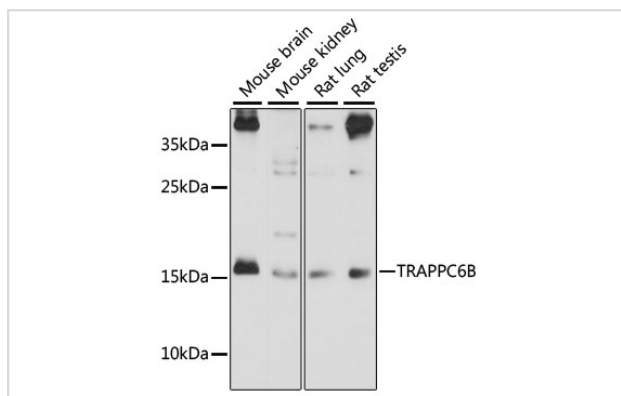
Description

| | |
|-----------------------|---|
| Product Name | TRAPPC6B Polyclonal Antibody |
| Host Species | Rabbit |
| Clonality | Polyclonal |
| Isotype | IgG |
| Purification | Affinity purification |
| Applications | WB,IHC |
| Species Reactivity | Mouse,Rat |
| Immunogen Description | Recombinant fusion protein of human TRAPPC6B (NP_803235.1). |
| Other Names | TRAPPC6B;TPC6 |
| Accession No. | Uniprot:Q86SZ2GeneID:122553 |
| Calculated MW | 18kDa |
| SDS-PAGE MW | 18kDa |
| Formulation | PBS with 0.02% sodium azide,50% glycerol,pH7.3. |
| Storage | Store at -20°C. Avoid freeze / thaw cycles. |

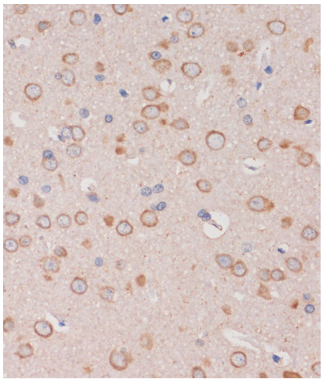
Application Details

WB □ 1:200 - 1:2000 IHC □ 1:50 - 1:200

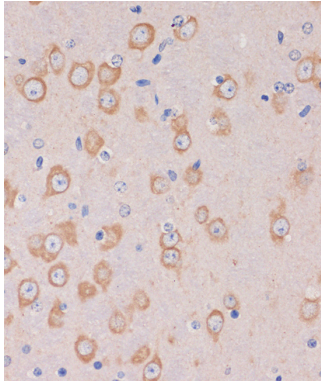
Images



Western blot analysis of extracts of various cell lines, using TRAPPC6B antibody.



Immunohistochemistry of paraffin-embedded Rat brain using TRAPPC6B Rabbit pAb.



Immunohistochemistry of paraffin-embedded Mouse brain using TRAPPC6B Rabbit pAb.

Background

TRAPPC6B is a component of TRAPP complexes, which are tethering complexes involved in vesicle transport (Kummel et al., 2005 [PubMed 16025134]).[supplied by OMIM, Mar 2008]

Note: This product is for in vitro research use only and is not intended for use in humans or animals.