

## TIMMDC1 Polyclonal Antibody

Catalog No: #29448

Package Size: #29448-1 50ul #29448-2 100ul

Orders: [order@signalwayantibody.com](mailto:order@signalwayantibody.com)Support: [tech@signalwayantibody.com](mailto:tech@signalwayantibody.com)

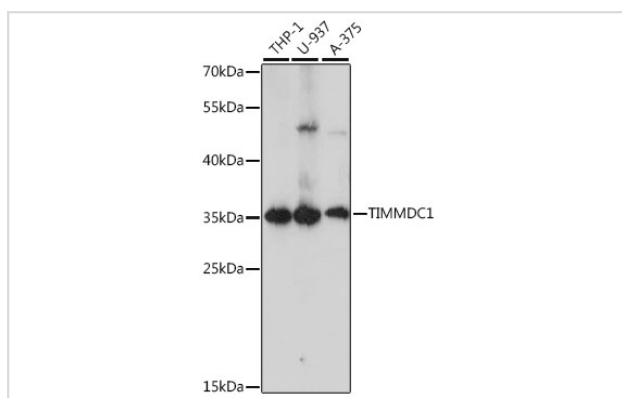
## Description

Product Name	TIMMDC1 Polyclonal Antibody
Host Species	Rabbit
Clonality	Polyclonal
Isotype	IgG
Purification	Affinity purification
Applications	WB,IHC
Species Reactivity	Human,Mouse,Rat
Immunogen Description	Recombinant fusion protein of human TIMMDC1 (NP_057673.2).
Other Names	TIMMDC1;C3orf1
Accession No.	Uniprot:Q9NPL8GeneID:51300
Calculated MW	32kDa
SDS-PAGE MW	32kDa
Formulation	PBS with 0.02% sodium azide,50% glycerol,pH7.3.
Storage	Store at -20°C. Avoid freeze / thaw cycles.

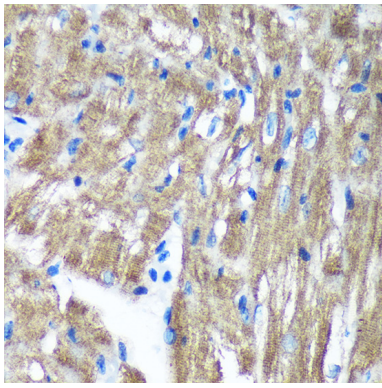
## Application Details

WB □ 1:500 - 1:2000 IHC □ 1:50 - 1:200

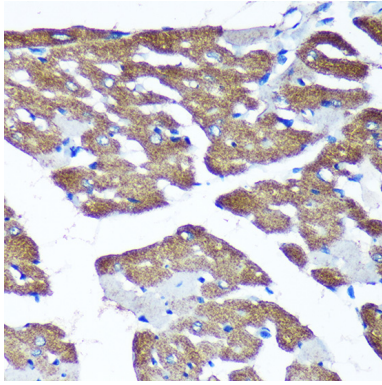
## Images



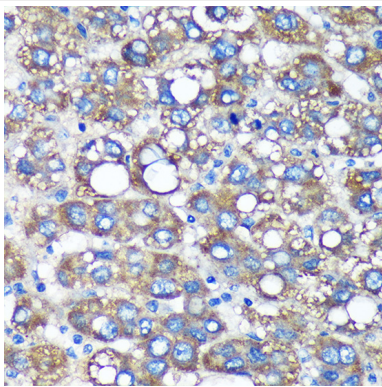
Western blot analysis of extracts of various cell lines, using TIMMDC1 antibody.



Immunohistochemistry of paraffin-embedded Mouse heart using TIMMDC1 Rabbit pAb.



Immunohistochemistry of paraffin-embedded Rat heart using TIMMDC1 Rabbit pAb.



Immunohistochemistry of paraffin-embedded Human liver cancer using TIMMDC1 Rabbit pAb.

## Background

Chaperone protein involved in the assembly of the mitochondrial NADH:ubiquinone oxidoreductase complex (complex I). Participates in constructing the membrane arm of complex I.

Note: This product is for in vitro research use only and is not intended for use in humans or animals.