

## NSMCE1 Polyclonal Antibody

Catalog No: #29518



Package Size: #29518-1 50ul #29518-2 100ul

Orders: order@signalwayantibody.com

Support: tech@signalwayantibody.com

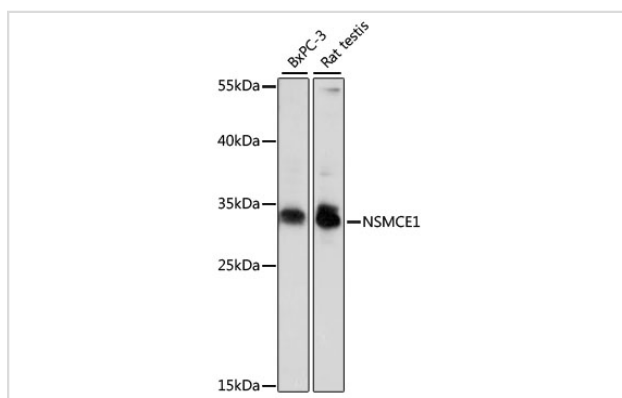
## Description

Product Name	NSMCE1 Polyclonal Antibody
Host Species	Rabbit
Clonality	Polyclonal
Isotype	IgG
Purification	Affinity purification
Applications	WB
Species Reactivity	Human,Rat
Immunogen Description	Recombinant fusion protein of human NSMCE1 (NP_659547.2).
Other Names	NSMCE1; NSE1; NSE1 homolog, SMC5-SMC6 complex component
Accession No.	Swiss-Prot#:Q8WV22NCBI Gene ID:197370
Calculated MW	31kDa
Formulation	Avoid freeze / thaw cycles.   Buffer: PBS with 50% glycerol, pH7.4.
Storage	Store at -20°C

## Application Details

WB □ 1:500 - 1:2000

## Images



Western blot analysis of extracts of various cell lines, using NSMCE1 antibody at 1000 dilution.

## Background

Note: This product is for in vitro research use only and is not intended for use in humans or animals.