

## ZNF280B Antibody

Catalog No: #46266



Package Size: #46266-1 50ul #46266-2 100ul

Orders: [order@signalwayantibody.com](mailto:order@signalwayantibody.com)Support: [tech@signalwayantibody.com](mailto:tech@signalwayantibody.com)

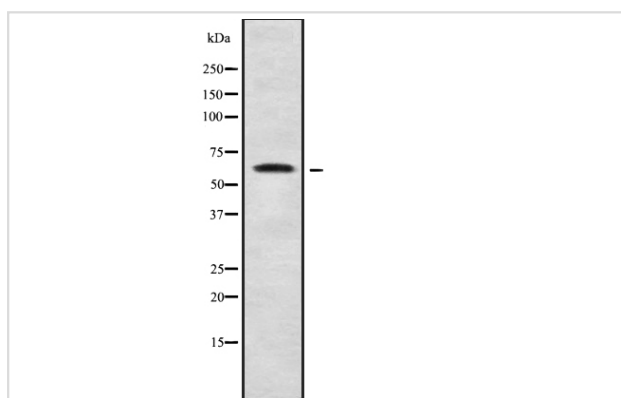
## Description

Product Name	ZNF280B Antibody
Host Species	Rabbit
Clonality	Polyclonal
Purification	Rabbit IgG in phosphate buffered saline , pH 7.4, 150mM NaCl, 0.02% sodium azide and 50% glycerol.
Applications	WB
Species Reactivity	Hu Ms
Specificity	ZNF280B Antibody detects endogenous levels of total ZNF280B
Immunogen Type	Peptide
Immunogen Description	A synthesized peptide derived from human ZNF280B
Target Name	ZNF280B
Other Names	ZNF280B, 5OY11.1, 5'OY11.1, SUHW2, Zinc finger protein 279, ZNF632, Zinc finger protein 632, D87009.C22.3, Zinc finger protein 280B, ZNF279
Accession No.	Swiss-Prot#: Q86YH2NCBI Gene ID:140883
Calculated MW	62 kDa
Concentration	1.0mg/mL
Formulation	Rabbit IgG in phosphate buffered saline , pH 7.4, 150mM NaCl, 0.02% sodium azide and 50% glycerol.
Storage	Store at -20°C

## Application Details

Western blotting: 1:1000-3000

## Images



Western blot analysis ZNF280B using K562 whole cell lysates

Note: This product is for in vitro research use only and is not intended for use in humans or animals.