

## OR1A1 Polyclonal Antibody

Catalog No: #29844

Package Size: #29844-1 50ul #29844-2 100ul

Orders: order@signalwayantibody.com

Support: tech@signalwayantibody.com

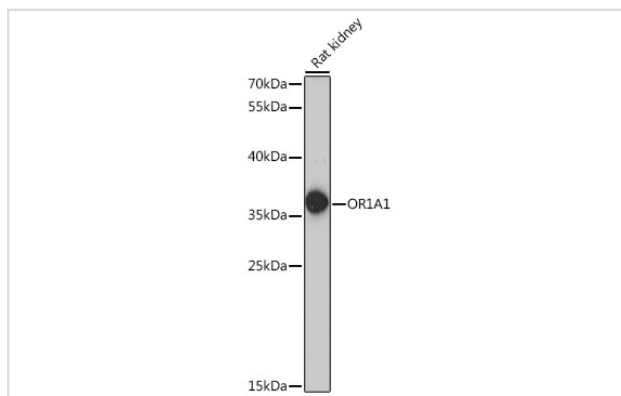
## Description

Product Name	OR1A1 Polyclonal Antibody
Host Species	Rabbit
Clonality	Polyclonal
Isotype	IgG
Purification	Affinity purification
Applications	WB,IHC
Species Reactivity	Hu,Ms,Rt
Immunogen Description	A synthetic peptide of human OR1A1 (NP_055380.2).
Other Names	OR1A1; OR17-7; olfactory receptor 1A1
Accession No.	Swiss-Prot#:Q9P1Q5NCBI Gene ID:8383
Calculated MW	35kDa
Formulation	Avoid freeze / thaw cycles. Buffer: PBS with 50% glycerol, pH7.4.
Storage	Store at -20°C

## Application Details

WB □ 1:500 - 1:2000 IHC □ 1:100 - 1:200

## Images



Western blot analysis of extracts of rat kidney, using OR1A1 antibody.

## Background

Olfactory receptors interact with odorant molecules in the nose, to initiate a neuronal response that triggers the perception of a smell. The olfactory receptor proteins are members of a large family of G-protein-coupled receptors (GPCR) arising from single coding-exon genes. Olfactory receptors share a 7-transmembrane domain structure with many neurotransmitter and hormone receptors and are responsible for the recognition and G protein-mediated transduction of odorant signals. The olfactory receptor gene family is the largest in the genome. The nomenclature assigned to the olfactory receptor genes and proteins for this organism is independent of other organisms.

---

Note: This product is for in vitro research use only and is not intended for use in humans or animals.