

## EFS Polyclonal Antibody

Catalog No: #29850

Package Size: #29850-1 50ul #29850-2 100ul

Orders: order@signalwayantibody.com

Support: tech@signalwayantibody.com

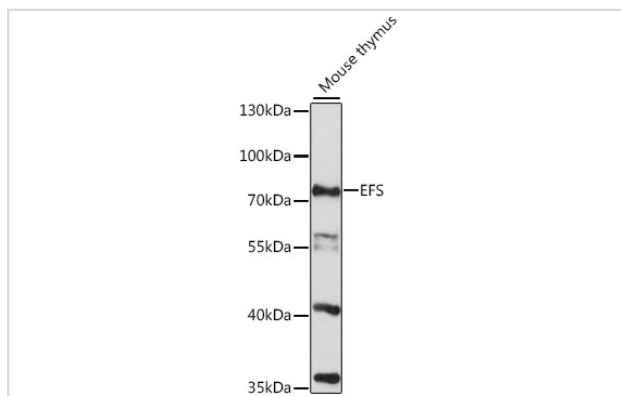
## Description

Product Name	EFS Polyclonal Antibody
Host Species	Rabbit
Clonality	Polyclonal
Isotype	IgG
Purification	Affinity purification
Applications	WB
Species Reactivity	Ms
Immunogen Description	Recombinant fusion protein of human EFS (NP_115835.1).
Other Names	EFS; CAS3; CASS3; EFS1; EFS2; HEFS; SIN; embryonal Fyn-associated substrate
Accession No.	Swiss-Prot#:O43281NCBI Gene ID:10278
Calculated MW	75kDa
Formulation	Avoid freeze / thaw cycles.   Buffer: PBS with 50% glycerol, pH7.4.
Storage	Store at -20°C

## Application Details

WB □ 1:500 - 1:2000

## Images



Western blot analysis of extracts of mouse thymus, using EFS antibody.

## Background

The longest protein isoform encoded by this gene contains an SH3 domain, which is known to be important in intracellular signal transduction. The protein encoded by a similar gene in mice was shown to bind to SH3 domains of protein-tyrosine kinases. The function of this gene is unknown. Three alternatively spliced variants encoding different isoforms have been described for this gene.

---

Note: This product is for in vitro research use only and is not intended for use in humans or animals.