

## LIN7C Polyclonal Antibody

Catalog No: #29874

Package Size: #29874-1 50ul #29874-2 100ul

Orders: order@signalwayantibody.com

Support: tech@signalwayantibody.com

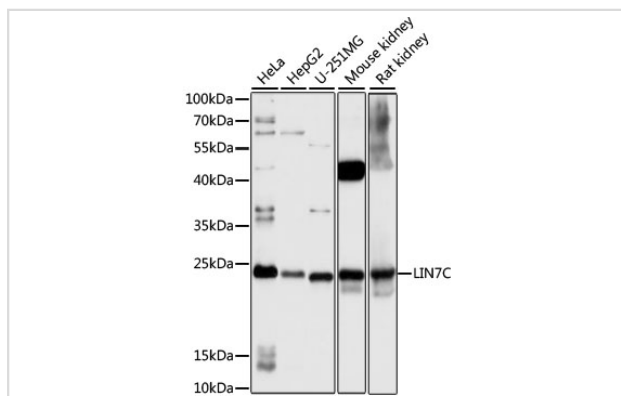
## Description

Product Name	LIN7C Polyclonal Antibody
Host Species	Rabbit
Clonality	Polyclonal
Isotype	IgG
Purification	Affinity purification
Applications	WB
Species Reactivity	Hu,Ms,Rt
Immunogen Description	Recombinant fusion protein of human LIN7C (NP_060832.1).
Other Names	LIN7C; LIN-7-C; LIN-7C; MALS-3; MALS3; VELI3; protein lin-7 homolog C
Accession No.	Swiss-Prot#:Q9NUP9NCBI Gene ID:55327
Calculated MW	25kDa
Formulation	Avoid freeze / thaw cycles.   Buffer: PBS with 50% glycerol, pH7.4.
Storage	Store at -20°C

## Application Details

WB □ 1:500 - 1:2000

## Images



Western blot analysis of extracts of various cell lines, using LIN7C antibody.

## Background

Note: This product is for in vitro research use only and is not intended for use in humans or animals.