

## NPB Polyclonal Antibody

Catalog No: #29914



Package Size: #29914-1 50ul #29914-2 100ul

Orders: [order@signalwayantibody.com](mailto:order@signalwayantibody.com)Support: [tech@signalwayantibody.com](mailto:tech@signalwayantibody.com)

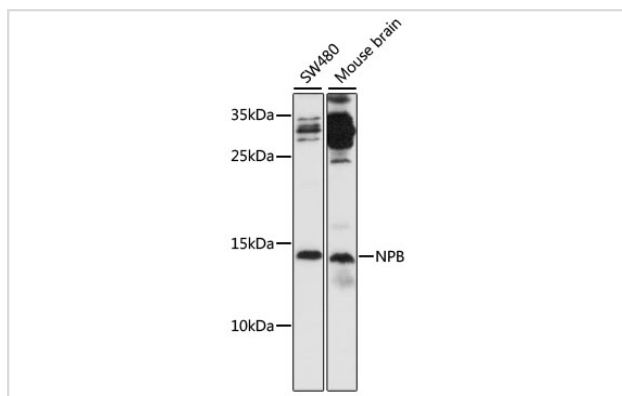
## Description

Product Name	NPB Polyclonal Antibody
Host Species	Rabbit
Clonality	Polyclonal
Isotype	IgG
Purification	Affinity purification
Applications	WB,IF
Species Reactivity	Human,Mouse
Immunogen Description	Recombinant fusion protein of human NPB (NP_683694.1).
Other Names	NPB;L7;PPL7;PPNPB
Accession No.	Uniprot:Q8NG41GeneID:256933
Calculated MW	13kDa
SDS-PAGE MW	13kDa
Formulation	PBS with 0.02% sodium azide,50% glycerol,pH7.3.
Storage	Store at -20°C. Avoid freeze / thaw cycles.

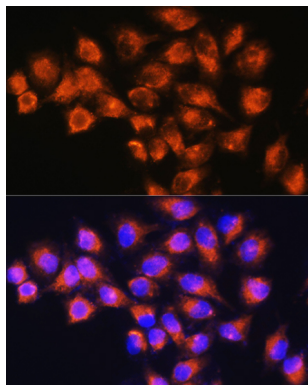
## Application Details

WB □ 1:500 - 1:2000 IF □ 1:50 - 1:200

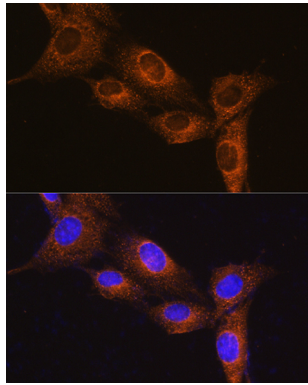
## Images



Western blot analysis of extracts of various cell lines, using NPB antibody.



Immunofluorescence analysis of HeLa cells using NPB Rabbit pAb.



Immunofluorescence analysis of NIH/3T3 cells using NPB Rabbit pAb.

## Background

This gene encodes a member of the neuropeptide B/W family of proteins and preproprotein that is proteolytically processed to generate multiple protein products. The encoded products include neuropeptide B-23 and a C-terminally extended form, neuropeptide B-29, which are characterized by an N-terminal brominated tryptophan amino acid. Both of the encoded peptides bind with higher affinity to neuropeptide B/W (NPB/W) receptor 1 compared to the related NPB/W receptor 2. These peptides may regulate feeding, pain perception, and stress in rodents.

Note: This product is for in vitro research use only and is not intended for use in humans or animals.