

ERK1 / ERK2 Polyclonal Antibody

Catalog No: #29935



Package Size: #29935-1 50ul #29935-2 100ul

Orders: order@signalwayantibody.com

Support: tech@signalwayantibody.com

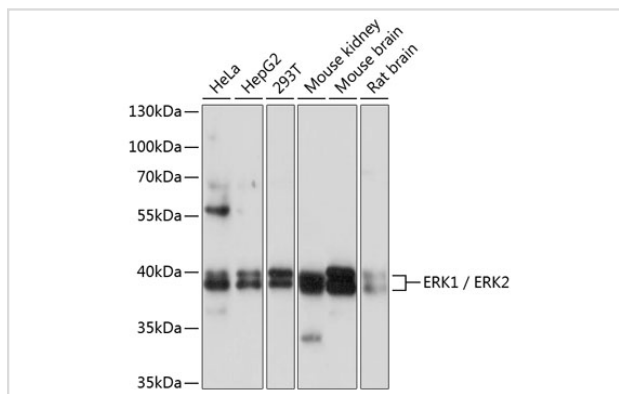
Description

| | |
|-----------------------|---|
| Product Name | ERK1 / ERK2 Polyclonal Antibody |
| Host Species | Rabbit |
| Clonality | Polyclonal |
| Isotype | IgG |
| Purification | Affinity purification |
| Applications | WB,IHC,IF |
| Species Reactivity | Hu,Ms,Rt |
| Immunogen Description | Recombinant Protein of human ERK1 / ERK2 |
| Accession No. | Swiss-Prot#:P28482/P27361NCBI Gene ID:5594/5595 |
| Calculated MW | 42kDa/44kDa |
| Formulation | Avoid freeze / thaw cycles. Buffer: PBS with 50% glycerol, pH7.4. |
| Storage | Store at -20°C |

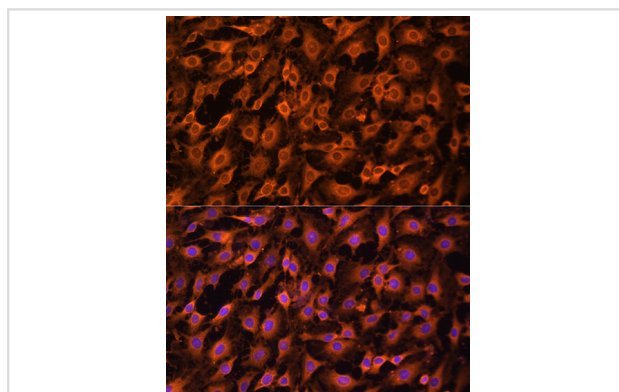
Application Details

WB 1:1000 - 1:2000 IHC 1:50 - 1:200 IF 1:50 - 1:200

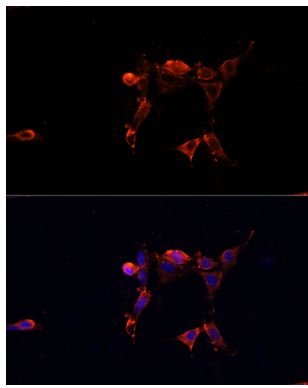
Images



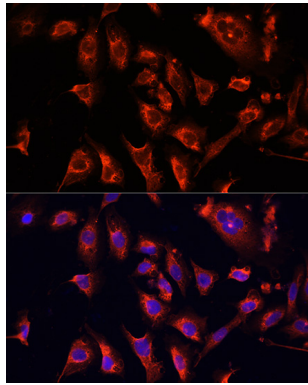
Western blot analysis of extracts of various cell lines, using ERK1 / ERK2 antibody.



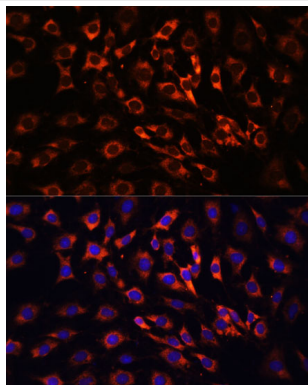
Immunofluorescence analysis of C6 cells using ERK1 / ERK2 antibody.



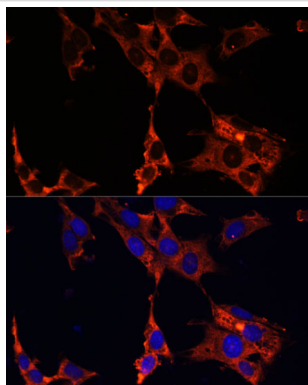
Immunofluorescence analysis of NIH/3T3 cells using ERK1 / ERK2 antibody.



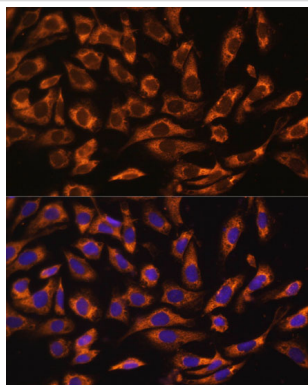
Immunofluorescence analysis of U2OS cells using ERK1 / ERK2 antibody.



Immunofluorescence analysis of C6 cells using ERK1 / ERK2 Polyclonal Antibody.



Immunofluorescence analysis of NIH-3T3 cells using ERK1 / ERK2 Polyclonal Antibody.



Immunofluorescence analysis of U-2 OS cells using ERK1 / ERK2 Polyclonal Antibody.

Note: This product is for in vitro research use only and is not intended for use in humans or animals.