

ZCCHC3 Polyclonal Antibody

Catalog No: #30000



Package Size: #30000-1 50ul #30000-2 100ul

Orders: order@signalwayantibody.com

Support: tech@signalwayantibody.com

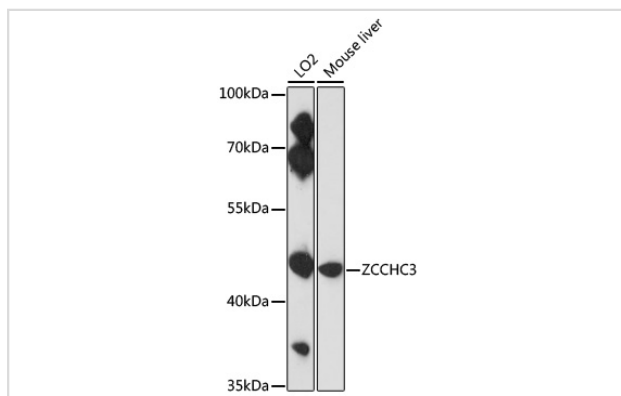
Description

Product Name	ZCCHC3 Polyclonal Antibody
Host Species	Rabbit
Clonality	Polyclonal
Isotype	IgG
Purification	Affinity purification
Applications	WB,IF
Species Reactivity	Human,Mouse
Immunogen Description	Recombinant fusion protein of human ZCCHC3 (NP_149080.2).
Other Names	ZCCHC3; C20orf99; zinc finger CCHC-type containing 3
Accession No.	Swiss-Prot#:Q9NUD5NCBI Gene ID:85364
Calculated MW	43kDa
Formulation	Avoid freeze / thaw cycles. Buffer: PBS with 50% glycerol, pH7.4.
Storage	Store at -20°C

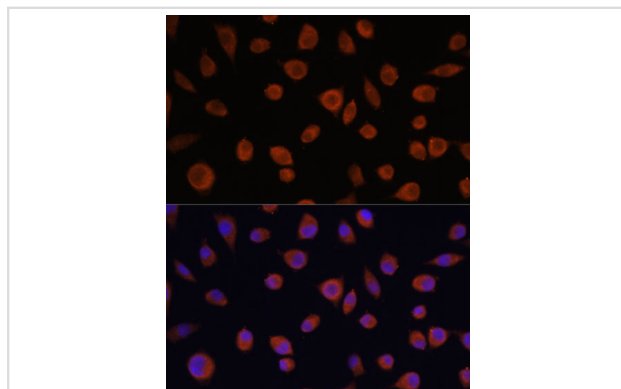
Application Details

WB □ 1:500 - 1:2000 IF □ 1:50 - 1:200

Images



Western blot analysis of extracts of various cell lines, using ZCCHC3 antibody at 1:3000 dilution.



Immunofluorescence analysis of L929 cells using ZCCHC3 antibody at dilution of 1:100. Blue: DAPI for nuclear staining.

Background

Published Papers

el at., Host Zinc-finger CCHC-type containing protein 3 inhibits pseudorabies virus proliferation by regulating type I interferon signaling. In Gene on 2022 Jun 15 by Xiaoyong Chen, Tongling Shan, et al..PMID:35390445, , (2022)

[PMID:35390445](#)

el at., Proteomic analysis reveals zinc-finger CCHC-type containing protein 3 as a factor inhibiting virus infection by promoting innate signaling. In Virus Res on 2022 Oct 2 by Xiaoyong Chen, Ziwei Li, et al..PMID:35872280, , (2022)

[PMID:35872280](#)

Note: This product is for in vitro research use only and is not intended for use in humans or animals.