

ZDHHC8 Polyclonal Antibody

Catalog No: #30020

Package Size: #30020-1 50ul #30020-2 100ul

Orders: order@signalwayantibody.com

Support: tech@signalwayantibody.com

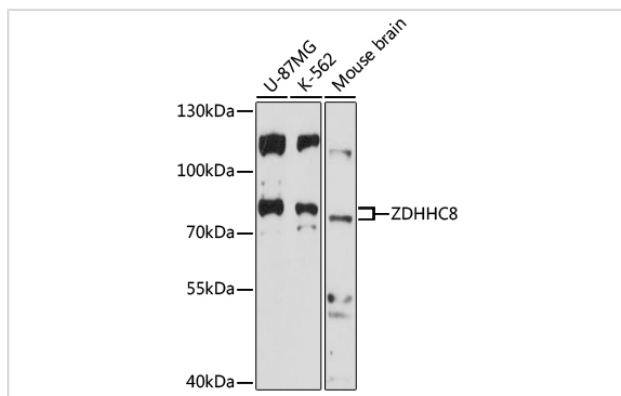
Description

Product Name	ZDHHC8 Polyclonal Antibody
Host Species	Rabbit
Clonality	Polyclonal
Isotype	IgG
Purification	Affinity purification
Applications	WB
Species Reactivity	Hu,Ms
Immunogen Description	Recombinant fusion protein of human ZDHHC8 (NP_037505.1).
Other Names	ZDHHC8; DHHC8; ZDHHCL1; ZNF378; zinc finger DHHC-type containing 8
Accession No.	Swiss-Prot#:Q9ULC8NCBI Gene ID:29801
Calculated MW	81kDa
Formulation	Avoid freeze / thaw cycles. Buffer: PBS with 50% glycerol, pH7.4.
Storage	Store at -20°C

Application Details

WB □ 1:500 - 1:2000

Images



Western blot analysis of extracts of various cell lines, using ZDHHC8 antibody.

Background

This gene encodes a four transmembrane protein that is a member of the zinc finger DHHC domain-containing protein family. The encoded protein may function as a palmitoyltransferase. Defects in this gene may be associated with a susceptibility to schizophrenia. Alternate splicing of this gene results in multiple transcript variants. A pseudogene of this gene is found on chromosome 22.

Note: This product is for in vitro research use only and is not intended for use in humans or animals.