

MOBP Polyclonal Antibody

Catalog No: #30023



Package Size: #30023-1 50ul #30023-2 100ul

Orders: order@signalwayantibody.comSupport: tech@signalwayantibody.com

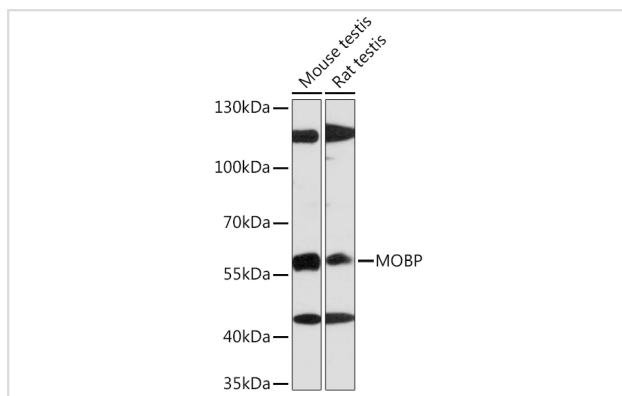
Description

Product Name	MOBP Polyclonal Antibody
Host Species	Rabbit
Clonality	Polyclonal
Isotype	IgG
Purification	Affinity purification
Applications	WB,IF
Species Reactivity	Human,Mouse,Rat
Immunogen Description	A synthetic Peptide of human MOBP
Other Names	MOBP
Accession No.	Uniprot:Q13875GeneID:4336
Calculated MW	Refer to figures
SDS-PAGE MW	59kDa
Formulation	PBS with 0.02% sodium azide,50% glycerol,pH7.3.
Storage	Store at -20°C. Avoid freeze / thaw cycles.

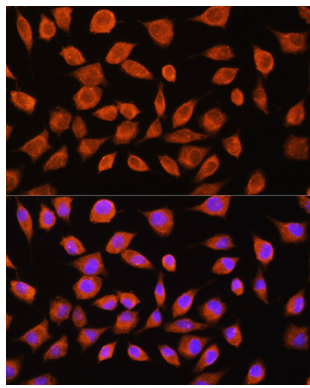
Application Details

WB □ 1:500 - 1:1000 IF □ 1:50 - 1:200

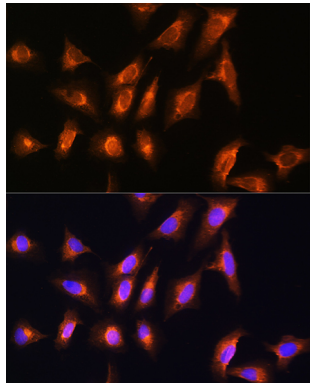
Images



Western blot analysis of extracts of various cell lines, using MOBP Rabbit pAb.



Immunofluorescence analysis of L929 cells using MOBP Rabbit pAb.



Immunofluorescence analysis of U2OS cells using MOBP Rabbit pAb.

Background

May play a role in compacting or stabilizing the myelin sheath, possibly by binding the negatively charged acidic phospholipids of the cytoplasmic membrane.

Note: This product is for in vitro research use only and is not intended for use in humans or animals.