

## OFD1 Polyclonal Antibody

Catalog No: #30078

Package Size: #30078-1 50ul #30078-2 100ul

Orders: order@signalwayantibody.com

Support: tech@signalwayantibody.com

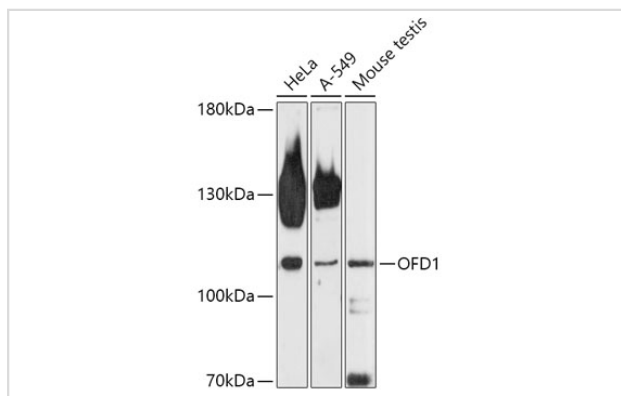
## Description

Product Name	OFD1 Polyclonal Antibody
Host Species	Rabbit
Clonality	Polyclonal
Isotype	IgG
Purification	Affinity purification
Applications	WB
Species Reactivity	Hu,Ms
Immunogen Description	Recombinant fusion protein of human OFD1 (NP_003602.1).
Other Names	71-7A, CXorf5, JBTS10, RP23, SGBS2
Accession No.	Swiss-Prot#:O75665NCBI Gene ID:8481
Calculated MW	117kDa
Formulation	Avoid freeze / thaw cycles.   Buffer: PBS with 50% glycerol, pH7.4.
Storage	Store at -20°C

## Application Details

WB □ 1:500 - 1:2000

## Images



Western blot analysis of extracts of various cell lines, using OFD1 antibody.

## Background

This gene is located on the X chromosome and encodes a centrosomal protein. A knockout mouse model has been used to study the effect of mutations in this gene. The mouse gene is also located on the X chromosome, however, unlike the human gene it is not subject to X inactivation. Mutations in this gene are associated with oral-facial-digital syndrome type I and Simpson-Golabi-Behmel syndrome type 2. Many pseudogenes have been identified; a single pseudogene is found on chromosome 5 while as many as fifteen have been found on the Y chromosome. [provided by RefSeq, Aug 2016]

---

Note: This product is for in vitro research use only and is not intended for use in humans or animals.