

MTMR8 Polyclonal Antibody

Catalog No: #30147

Package Size: #30147-1 50ul #30147-2 100ul

Orders: order@signalwayantibody.comSupport: tech@signalwayantibody.com

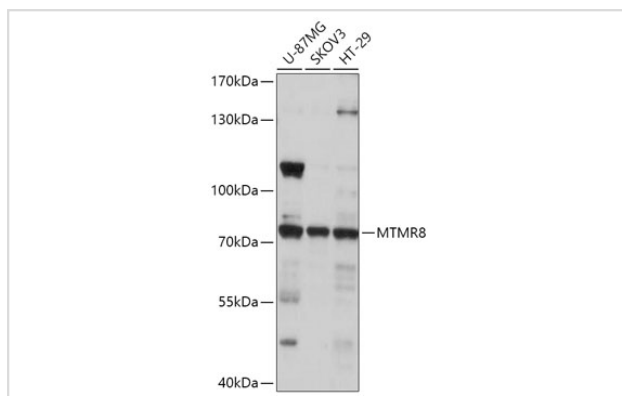
Description

Product Name	MTMR8 Polyclonal Antibody
Host Species	Rabbit
Clonality	Polyclonal
Isotype	IgG
Purification	Affinity purification
Applications	WB,IHC
Species Reactivity	Human,Mouse,Rat
Immunogen Description	Recombinant fusion protein of human MTMR8 (NP_060147.2).
Other Names	MTMR8
Accession No.	Uniprot:Q96EF0GeneID:55613
Calculated MW	79kDa
SDS-PAGE MW	79kDa
Formulation	PBS with 0.02% sodium azide,50% glycerol,pH7.3.
Storage	Store at -20°C. Avoid freeze / thaw cycles.

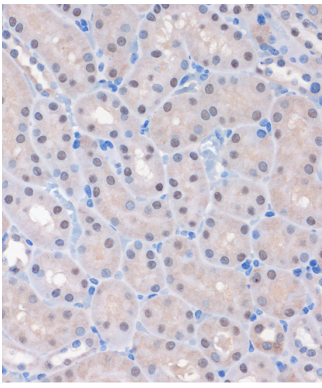
Application Details

WB □ 1:500 - 1:2000 IHC □ 1:50 - 1:200

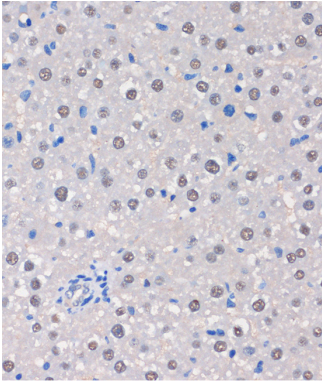
Images



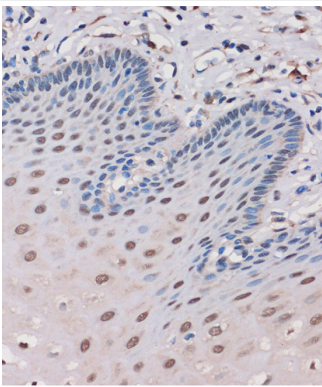
Western blot analysis of extracts of various cell lines, using MTMR8 antibody.



Immunohistochemistry of paraffin-embedded Mouse kidney using MTMR8 Rabbit pAb.



Immunohistochemistry of paraffin-embedded Rat liver using MTMR8 Rabbit pAb.



Immunohistochemistry of paraffin-embedded Human esophageal using MTMR8 Rabbit pAb.

Background

This gene encodes a member of the myotubularin-related family and is part of the MTMR6 subgroup. Family members are dual-specificity phosphatases and the encoded protein contains a phosphoinositide-binding domain (PID) and a SET-interacting domain (SID). Defects in other family members have been found in myotubular myopathic diseases. [provided by RefSeq, Mar 2010]

Note: This product is for in vitro research use only and is not intended for use in humans or animals.