

Cdk1/2 (Phospho-Thr14) Antibody

Catalog No: #12792



Package Size: #12792-1 50ul #12792-2 100ul

Orders: order@signalwayantibody.comSupport: tech@signalwayantibody.com

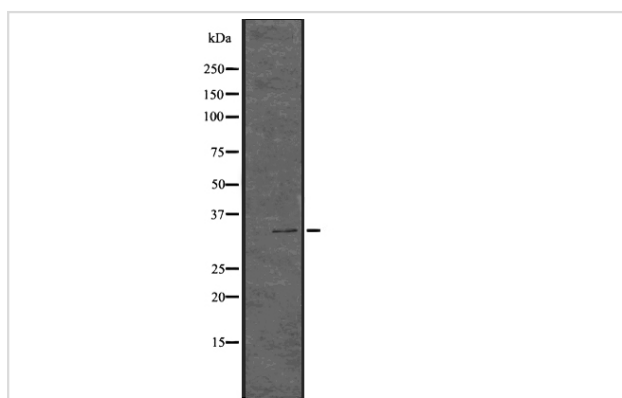
Description

Product Name	Cdk1/2 (Phospho-Thr14) Antibody
Host Species	Rabbit
Clonality	Polyclonal
Purification	Affinity purification using immunogen.
Applications	WB
Species Reactivity	Hu Ms Rt
Specificity	Cdk1/2 (Phospho-Thr14) Antibody detects endogenous levels of Cdk1/2 only when phosphorylated at Thr14
Immunogen Type	Peptide
Immunogen Description	Synthesized peptide derived from human Cdk1/2 around the phosphorylation site of Thr14.
Target Name	Cdk1/2 (Phospho-Thr14)
Modification	Phospho
Other Names	CDK1, CDC28A, CDC2, CDKN1, Cyclin-dependent kinase 1, p34 protein kinase, p34CDC2, CDC2a, Cell cycle controller CDC2, Cell division protein kinase 1, PSTAIR
Accession No.	Swiss-Prot#: P06493/P24941NCBI Gene ID: 983/1017
Target Species	human
Calculated MW	34kDa
Concentration	1.0mg/mL
Formulation	Rabbit IgG in phosphate buffered saline , pH 7.4, 150mM NaCl, 0.02% sodium azide and 50% glycerol.
Storage	Store at -20°C

Application Details

Western blotting: 1:1000-3000

Images



Western blot analysis Cdk1/2 (Phospho-Thr14) using 293 whole cell lysates

Note: This product is for in vitro research use only and is not intended for use in humans or animals.