

EAF1 Polyclonal Antibody

Catalog No: #30182

Package Size: #30182-1 50ul #30182-2 100ul

Orders: order@signalwayantibody.comSupport: tech@signalwayantibody.com

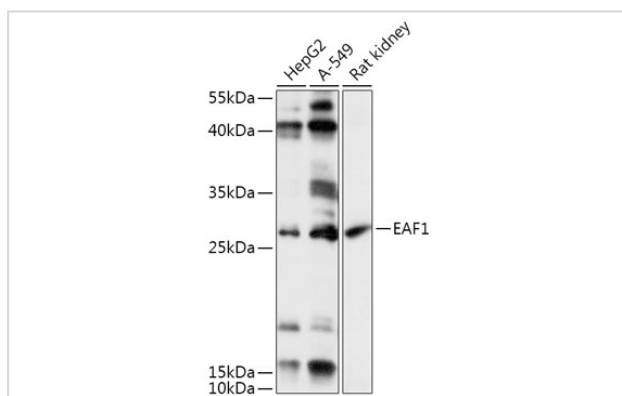
Description

Product Name	EAF1 Polyclonal Antibody
Host Species	Rabbit
Clonality	Polyclonal
Isotype	IgG
Purification	Affinity purification
Applications	WB
Species Reactivity	Hu,Rt
Immunogen Description	Recombinant fusion protein of human EAF1 (NP_149074.3).
Accession No.	Swiss-Prot#:Q96JC9NCBI Gene ID:85403
Calculated MW	29kDa
Formulation	Avoid freeze / thaw cycles. Buffer: PBS with 50% glycerol, pH7.4.
Storage	Store at -20°C

Application Details

WB □ 1:500 - 1:2000

Images



Western blot analysis of extracts of various cell lines, using EAF1 antibody.

Background

Note: This product is for in vitro research use only and is not intended for use in humans or animals.