

Histone H1.3 (Phospho-Thr17) +H1.4 (Phospho-Thr17) Antibody

Catalog No: #12793

Orders: order@signalwayantibody.comSupport: tech@signalwayantibody.com

Package Size: #12793-1 50ul #12793-2 100ul

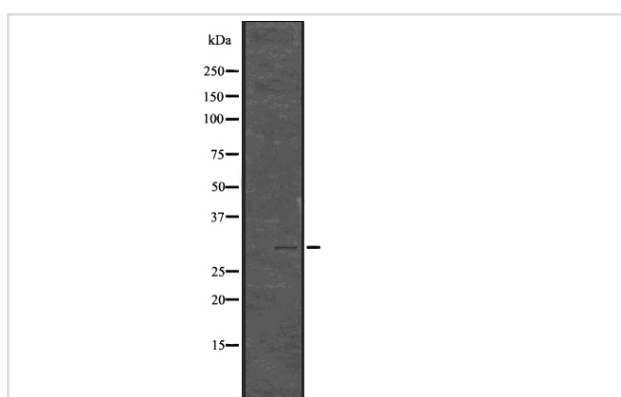
Description

| | |
|-----------------------|--|
| Product Name | Histone H1.3 (Phospho-Thr17) +H1.4 (Phospho-Thr17) Antibody |
| Host Species | Rabbit |
| Clonality | Polyclonal |
| Purification | Affinity purification using immunogen. |
| Applications | WB |
| Species Reactivity | Hu Ms Rt |
| Specificity | Histone H1.3 (Phospho-Thr17) +H1.4 (Phospho-Thr17) Antibody detects endogenous levels of Histone H1.3 only when phosphorylated at Thr17 |
| Immunogen Type | Peptide |
| Immunogen Description | Synthesized peptide derived from human Histone H1.3 +H1.4 around the phosphorylation site of Thr17. |
| Target Name | Histone H1.3 (Phospho-Thr17) +H1.4 (Phospho-Thr17) |
| Modification | Phospho |
| Other Names | HIST1H1E, H1.4, Histone cluster 1, H1e, Histone H1b, H1 histone family, member 4, H1s-4, Histone 1 family 4, Histone 1, H1e, Histone H1.4, H1E |
| Accession No. | Swiss-Prot#: P10412/P16402NCBI Gene ID: 3008/3007 |
| Target Species | human |
| Calculated MW | 30kDa |
| Concentration | 1.0mg/mL |
| Formulation | Rabbit IgG in phosphate buffered saline , pH 7.4, 150mM NaCl, 0.02% sodium azide and 50% glycerol. |
| Storage | Store at -20°C |

Application Details

Western blotting: 1:1000-3000

Images



Western blot analysis Histone H1.3 (Phospho-Thr17) +H1.4 (Phospho-Thr17) using 293 whole cell lysates

Note: This product is for in vitro research use only and is not intended for use in humans or animals.