

NAP1L5 Polyclonal Antibody

Catalog No: #30208

Package Size: #30208-1 50ul #30208-2 100ul

Orders: order@signalwayantibody.com

Support: tech@signalwayantibody.com

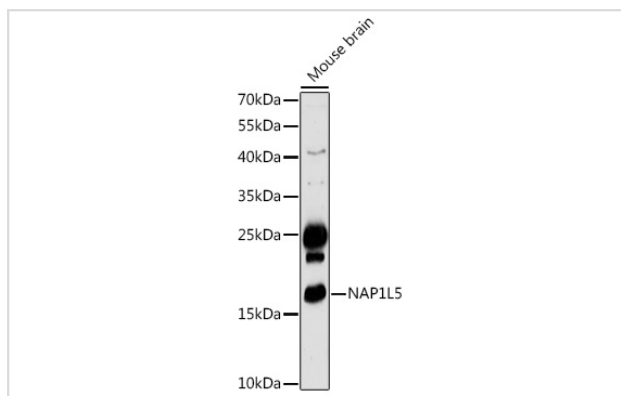
Description

Product Name	NAP1L5 Polyclonal Antibody
Host Species	Rabbit
Clonality	Polyclonal
Isotype	IgG
Purification	Affinity purification
Applications	WB
Species Reactivity	Mouse
Immunogen Description	Recombinant fusion protein of human NAP1L5 (NP_715638.1).
Other Names	DRLM;NAP1L5
Accession No.	Uniprot:Q96NT1GeneID:266812
Calculated MW	20kDa
SDS-PAGE MW	20kDa
Formulation	PBS with 0.02% sodium azide,50% glycerol,pH7.3.
Storage	Store at -20°C. Avoid freeze / thaw cycles.

Application Details

WB □ 1:500 - 1:2000

Images



Western blot analysis of extracts of Mouse brain, using NAP1L5 antibody.

Background

This gene encodes a protein that shares sequence similarity to nucleosome assembly factors, but may be localized to the cytoplasm rather than the nucleus. Expression of this gene is downregulated in hepatocellular carcinomas. This gene is located within a differentially methylated region (DMR) and is imprinted and paternally expressed. There is a related pseudogene on chromosome 4. [provided by RefSeq, Nov 2015]

Note: This product is for in vitro research use only and is not intended for use in humans or animals.