

MT-ND4 Polyclonal Antibody

Catalog No: #30241

Package Size: #30241-1 50ul #30241-2 100ul

Orders: order@signalwayantibody.comSupport: tech@signalwayantibody.com

Description

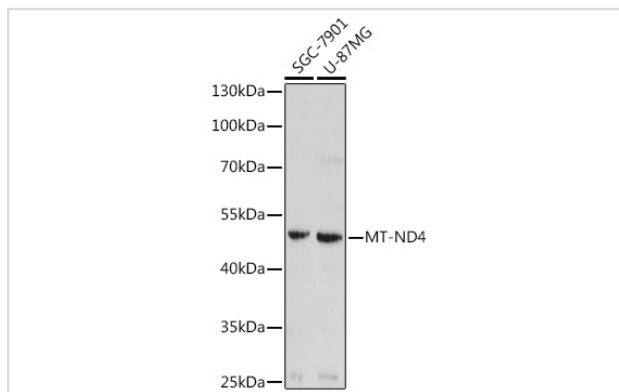
Product Name	MT-ND4 Polyclonal Antibody
Host Species	Rabbit
Clonality	Polyclonal
Isotype	IgG
Purification	Affinity purification
Applications	WB,IF
Species Reactivity	Human,Mouse,Rat
Immunogen Description	Recombinant protein of human MT-ND4.
Other Names	MTND4;MT-ND4
Accession No.	Uniprot:P03905GeneID:4538
Calculated MW	Refer to figures
SDS-PAGE MW	51kDa
Concentration	2.76 mg/mL
Formulation	PBS with 0.02% sodium azide,50% glycerol,pH7.3.
Storage	Store at -20°C. Avoid freeze / thaw cycles.

Application Details

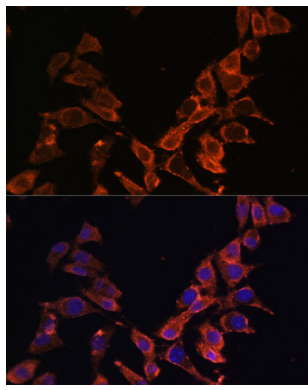
WB □ 1:500 - 1:2000

IF □ 1:50 - 1:200

Images



Western blot analysis of extracts of various cell lines, using MT-ND4 antibody.



Immunofluorescence analysis of L929 cells using MT-ND4 antibody.

Background

Core subunit of the mitochondrial membrane respiratory chain NADH dehydrogenase (Complex I which catalyzes electron transfer from NADH through the respiratory chain, using ubiquinone as an electron acceptor. Essential for the catalytic activity and assembly of complex I.

Note: This product is for in vitro research use only and is not intended for use in humans or animals.