

Mrpl46 Polyclonal Antibody

Catalog No: #30349



Package Size: #30349-1 50ul #30349-2 100ul

Orders: order@signalwayantibody.com

Support: tech@signalwayantibody.com

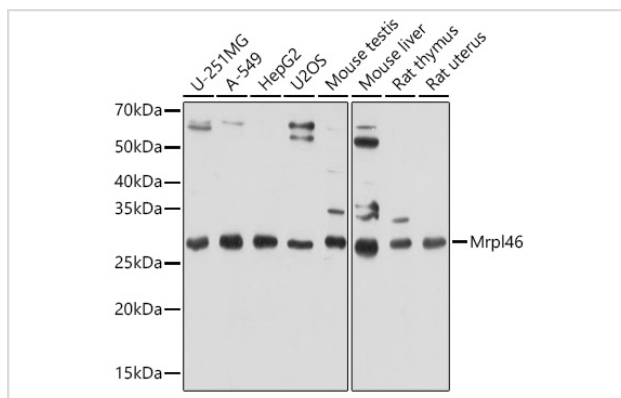
Description

Product Name	Mrpl46 Polyclonal Antibody
Host Species	Rabbit
Clonality	Polyclonal
Isotype	IgG
Purification	Affinity purification
Applications	WB,IHC
Species Reactivity	Human,Mouse,Rat
Immunogen Description	Recombinant protein of human Mrpl46 .
Other Names	C80107;LIECG2;P2ECSL;C15orf4;3110052F15Rik;Mrpl46
Accession No.	Uniprot:Q9EQI8GeneID:67308
Calculated MW	32kDa
SDS-PAGE MW	32kDa
Formulation	PBS with 0.02% sodium azide,50% glycerol,pH7.3.
Storage	Store at -20°C. Avoid freeze / thaw cycles.

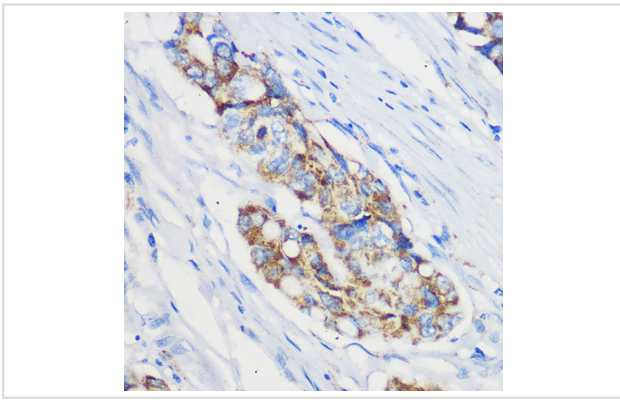
Application Details

WB □ 1:500 - 1:2000 IHC □ 1:50 - 1:200

Images



Western blot analysis of extracts of various cell lines, using Mrpl46 antibody.



Immunohistochemistry of paraffin-embedded Human colon carcinoma using Mrpl46 Rabbit pAb.

Note: This product is for in vitro research use only and is not intended for use in humans or animals.