

M1-linkage Specific Polyubiquitin pAb

Catalog No: #30356



Package Size: #30356-1 50ul #30356-2 100ul

Orders: order@signalwayantibody.com

Support: tech@signalwayantibody.com

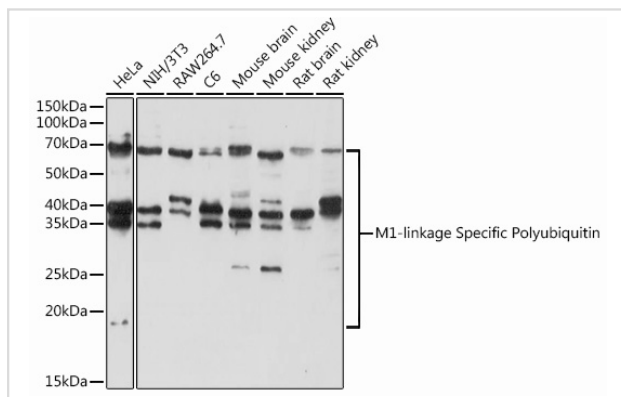
Description

Product Name	M1-linkage Specific Polyubiquitin pAb
Host Species	Rabbit
Clonality	Polyclonal
Isotype	IgG
Purification	Affinity purification
Applications	WB
Species Reactivity	Human,Mouse,Rat
Immunogen Description	A synthetic peptide of human M1-linkage Specific Polyubiquitin (NP_066289.3/NP_061828.1).
Calculated MW	Refer to figures
SDS-PAGE MW	Refer to figures
Formulation	PBS with 0.02% sodium azide,50% glycerol,pH7.3.
Storage	Store at -20°C. Avoid freeze / thaw cycles.

Application Details

WB □ 1:500 - 1:2000

Images



Western blot analysis of extracts of various cell lines, using M1-linkage Specific Polyubiquitin antibody.

Note: This product is for in vitro research use only and is not intended for use in humans or animals.