

EXO1 Polyclonal Antibody

Catalog No: #30403



Package Size: #30403-1 50ul #30403-2 100ul

Orders: order@signalwayantibody.com

Support: tech@signalwayantibody.com

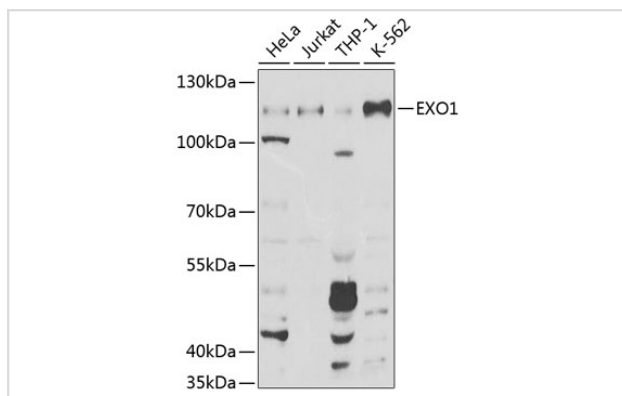
Description

Product Name	EXO1 Polyclonal Antibody
Host Species	Rabbit
Clonality	Polyclonal
Isotype	IgG
Purification	Affinity purification
Applications	WB,IHC
Species Reactivity	Human
Immunogen Description	Recombinant fusion protein of human EXO1 (NP_006018.4).
Other Names	EXO1;HEX1;hExol
Accession No.	Uniprot:Q9UQ84GeneID:9156
Calculated MW	115kDa
SDS-PAGE MW	115kDa
Formulation	PBS with 0.02% sodium azide,50% glycerol,pH7.3.
Storage	Store at -20°C. Avoid freeze / thaw cycles.

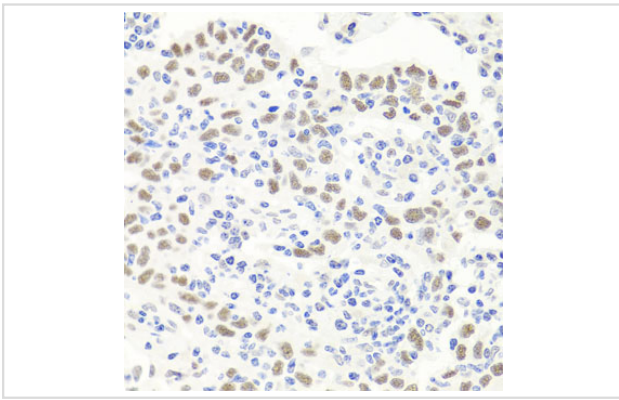
Application Details

WB 1:500 - 1:2000 IHC 1:50 - 1:100

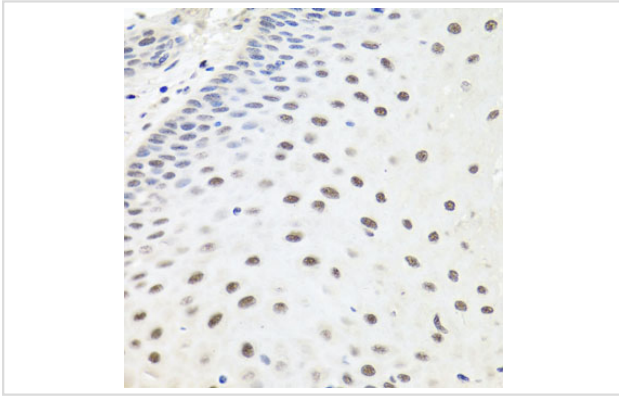
Images



Western blot analysis of extracts of various cell lines, using EXO1 Antibody.



Immunohistochemistry of paraffin-embedded human esophageal cancer using EXO1 antibody.



Immunohistochemistry of paraffin-embedded human esophagus using EXO1 antibody.

Background

This gene encodes a protein with 5' to 3' exonuclease activity as well as an RNase H activity. It is similar to the *Saccharomyces cerevisiae* protein Exo1 which interacts with Msh2 and which is involved in mismatch repair and recombination. Alternative splicing of this gene results in three transcript variants encoding two different isoforms.

Note: This product is for in vitro research use only and is not intended for use in humans or animals.