

EXT2 Polyclonal Antibody

Catalog No: #30404



Package Size: #30404-1 50ul #30404-2 100ul

Orders: order@signalwayantibody.com

Support: tech@signalwayantibody.com

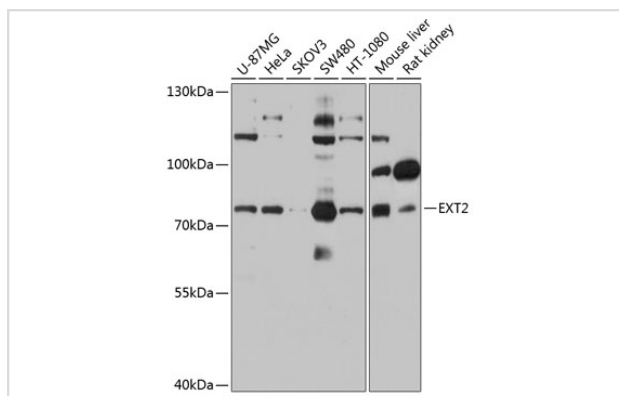
Description

Product Name	EXT2 Polyclonal Antibody
Host Species	Rabbit
Clonality	Polyclonal
Isotype	IgG
Purification	Affinity purification
Applications	WB,IF
Species Reactivity	Human,Mouse,Rat
Immunogen Description	Recombinant fusion protein of human EXT2 (NP_000392.3).
Other Names	EXT2;SOTV;SSMS
Accession No.	Uniprot:Q93063GeneID:2132
Calculated MW	82kDa
SDS-PAGE MW	82kDa
Formulation	PBS with 0.02% sodium azide,50% glycerol,pH7.3.
Storage	Store at -20°C. Avoid freeze / thaw cycles.

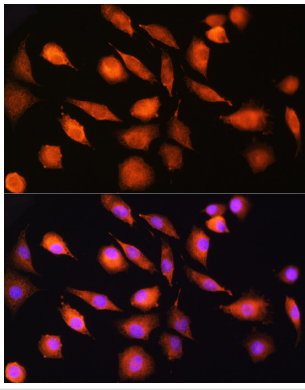
Application Details

WB □ 1:500 - 1:2000 IF □ 1:50 - 1:200

Images



Western blot analysis of extracts of various cell lines, using EXT2 antibody.



Immunofluorescence analysis of L929 cells using EXT2 Rabbit pAb.

Background

This gene encodes one of two glycosyltransferases involved in the chain elongation step of heparan sulfate biosynthesis. Mutations in this gene cause the type II form of multiple exostoses. Alternatively spliced transcript variants encoding different isoforms have been noted for this gene.

Note: This product is for in vitro research use only and is not intended for use in humans or animals.