

## ENO3 Polyclonal Antibody

Catalog No: #30496

Package Size: #30496-1 50ul #30496-2 100ul

Orders: order@signalwayantibody.com

Support: tech@signalwayantibody.com

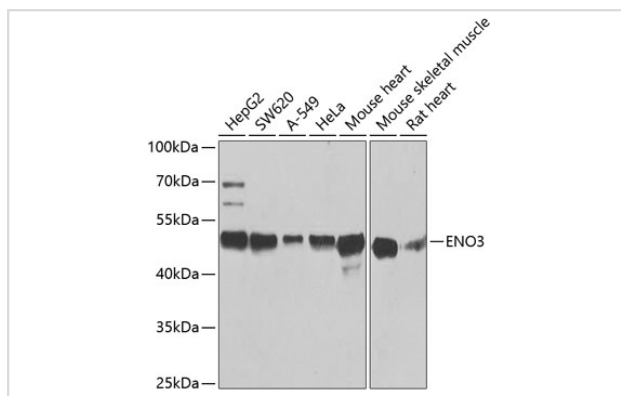
## Description

Product Name	ENO3 Polyclonal Antibody
Host Species	Rabbit
Clonality	Polyclonal
Isotype	IgG
Purification	Affinity purification
Applications	WB,IF
Species Reactivity	Human,Mouse,Rat
Immunogen Description	Recombinant fusion protein of human ENO3 (NP_001967.3).
Other Names	ENO3;GSD13;MSE;enolase 3
Accession No.	Uniprot:P13929GenelD:2027
Calculated MW	47kDa
SDS-PAGE MW	47kDa
Formulation	PBS with 0.02% sodium azide,50% glycerol,pH7.3.
Storage	Store at -20°C. Avoid freeze / thaw cycles.

## Application Details

WB □ 1:1000 - 1:4000 IF □ 1:50 - 1:200

## Images



Western blot analysis of extracts of various cell lines, using ENO3 antibody.

## Background

This gene encodes one of the three enolase isoenzymes found in mammals. This isoenzyme is found in skeletal muscle cells in the adult where it may play a role in muscle development and regeneration. A switch from alpha enolase to beta enolase occurs in muscle tissue during development in rodents. Mutations in this gene have been associated with glycogen storage disease. Alternatively spliced transcript variants encoding different isoforms have been described.

---

Note: This product is for in vitro research use only and is not intended for use in humans or animals.