

# EIF4E2 Polyclonal Antibody

Catalog No: #30543



Package Size: #30543-1 50ul #30543-2 100ul

Orders: [order@signalwayantibody.com](mailto:order@signalwayantibody.com)

Support: [tech@signalwayantibody.com](mailto:tech@signalwayantibody.com)

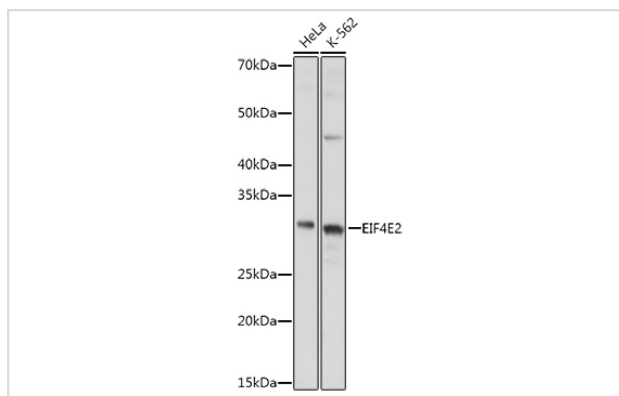
## Description

Product Name	EIF4E2 Polyclonal Antibody
Host Species	Rabbit
Clonality	Polyclonal
Isotype	IgG
Purification	Affinity purification
Applications	WB,IHC,IF
Species Reactivity	Human,Mouse,Rat
Immunogen Description	Recombinant fusion protein of human EIF4E2 (NP_004837.1).
Other Names	EIF4E2;4E-LP;4EHP;EIF4EL3;IF4e;h4EHP
Accession No.	Uniprot:O60573GeneID:9470
Calculated MW	28kDa
SDS-PAGE MW	27KDa/28KDa
Formulation	PBS with 0.02% sodium azide,50% glycerol,pH7.3.
Storage	Store at -20°C. Avoid freeze / thaw cycles.

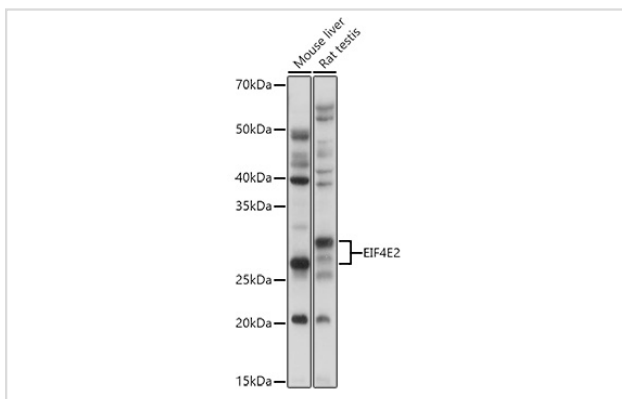
## Application Details

WB □ 1:200 - 1:2000 IHC □ 1:50 - 1:200 IF □ 1:50 - 1:200

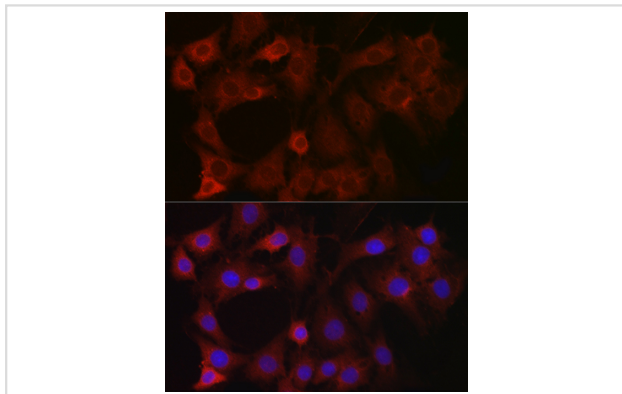
## Images



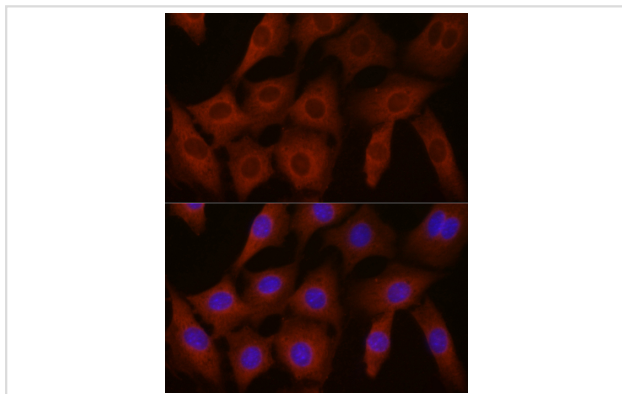
Western blot analysis of extracts of various cell lines, using EIF4E2 antibody.



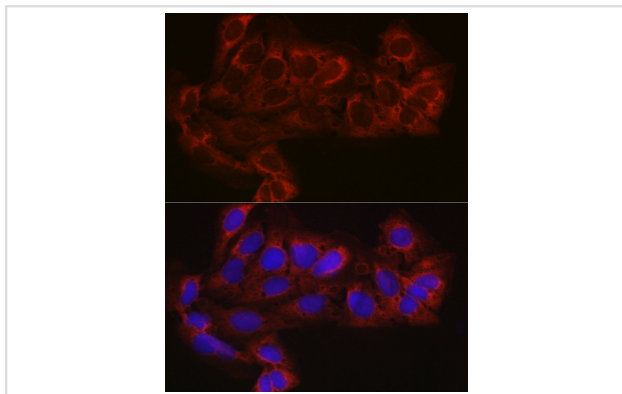
Western blot analysis of extracts of various cell lines, using EIF4E2 antibody.



Immunofluorescence analysis of C6 cells using EIF4E2 Rabbit pAb.



Immunofluorescence analysis of NIH-3T3 cells using EIF4E2 Rabbit pAb.



Immunofluorescence analysis of U-2 OS cells using EIF4E2 Rabbit pAb.

## Background

Recognizes and binds the 7-methylguanosine-containing mRNA cap during an early step in the initiation. Acts as a repressor of translation initiation. In contrast to EIF4E, it is unable to bind eIF4G (EIF4G1, EIF4G2 or EIF4G3, suggesting that it acts by competing with EIF4E and block assembly of eIF4F at the cap (By similarity). In P-bodies, component of a complex that promotes miRNA-mediated translational repression.

---

Note: This product is for in vitro research use only and is not intended for use in humans or animals.