

PIEZO1 Polyclonal Antibody

Catalog No: #30549

Package Size: #30549-1 50ul #30549-2 100ul

Orders: order@signalwayantibody.comSupport: tech@signalwayantibody.com

Description

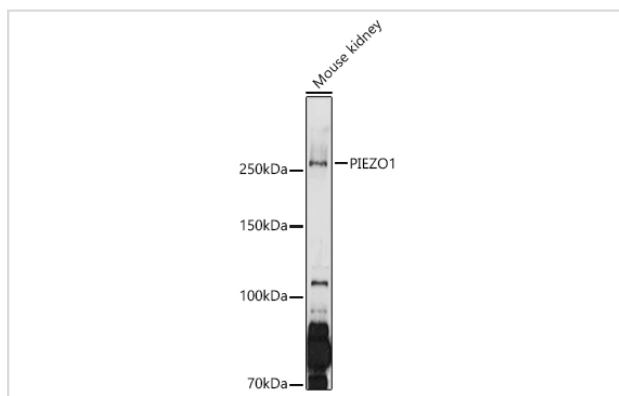
Product Name	PIEZO1 Polyclonal Antibody
Host Species	Rabbit
Clonality	Polyclonal
Isotype	IgG
Purification	Affinity purification
Applications	WB,IF
Species Reactivity	Human;Mouse;Rat
Immunogen Description	Recombinant fusion protein of human PIEZO1 (NP_001136336.2).
Other Names	PIEZO1;DHS;FAM38A;LMPH3;Mib
Accession No.	Uniprot:Q92508GeneID:9780
Calculated MW	300kDa
SDS-PAGE MW	287KDa
Formulation	PBS with 0.02% sodium azide,50% glycerol,pH7.3.
Storage	Store at -20°C. Avoid freeze / thaw cycles.

Application Details

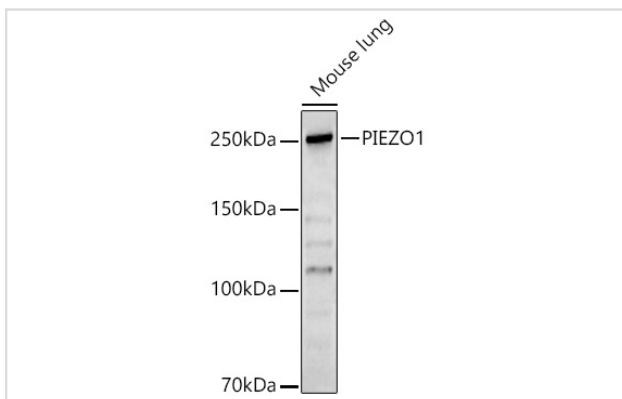
WB □ 1:500 - 1:2000

IF □ 1:50 - 1:200

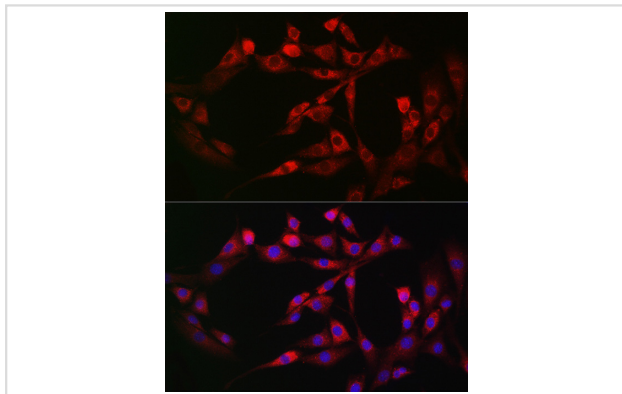
Images



Western blot analysis of extracts of Mouse kidney, using PIEZO1 antibody.



Western blot analysis of extracts of Mouse lung, using PIEZO1 antibody.



Immunofluorescence analysis of NIH-3T3 cells using PIEZO1 Rabbit pAb.

Background

The protein encoded by this gene is a mechanically-activated ion channel that links mechanical forces to biological signals. The encoded protein contains 36 transmembrane domains and functions as a homotetramer. Defects in this gene have been associated with dehydrated hereditary stomatocytosis.

Note: This product is for in vitro research use only and is not intended for use in humans or animals.