

## EMG1 Polyclonal Antibody

Catalog No: #30563

Package Size: #30563-1 50ul #30563-2 100ul

Orders: [order@signalwayantibody.com](mailto:order@signalwayantibody.com)Support: [tech@signalwayantibody.com](mailto:tech@signalwayantibody.com)

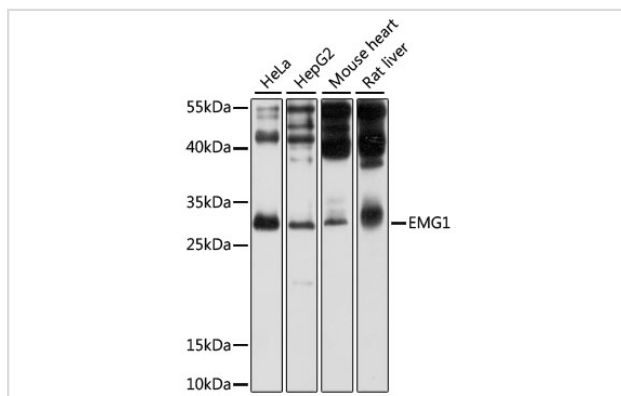
## Description

Product Name	EMG1 Polyclonal Antibody
Host Species	Rabbit
Clonality	Polyclonal
Isotype	IgG
Purification	Affinity purification
Applications	WB
Species Reactivity	Hu,Ms,Rt
Immunogen Description	Recombinant fusion protein of human EMG1 (NP_006322.4).
Other Names	EMG1; C2F; Grc2f; NEP1; EMG1, N1-specific pseudouridine methyltransferase
Accession No.	Swiss-Prot#:Q92979NCBI Gene ID:10436
Calculated MW	27kDa
Formulation	Avoid freeze / thaw cycles.   Buffer: PBS with 50% glycerol, pH7.4.
Storage	Store at -20°C

## Application Details

WB □ 1:500 - 1:2000

## Images



Western blot analysis of extracts of various cell lines, using EMG1 antibody.

## Background

This gene encodes an essential, conserved eukaryotic protein that methylates pseudouridine in 18S rRNA. The related protein in yeast is a component of the small subunit processome and is essential for biogenesis of the ribosomal 40S subunit. A mutation in this gene has been associated with Bowen-Conradi syndrome. Alternative splicing results in multiple transcript variants.

---

Note: This product is for in vitro research use only and is not intended for use in humans or animals.