

DMC1 Polyclonal Antibody

Catalog No: #30575



Package Size: #30575-1 50ul #30575-2 100ul

Orders: order@signalwayantibody.com

Support: tech@signalwayantibody.com

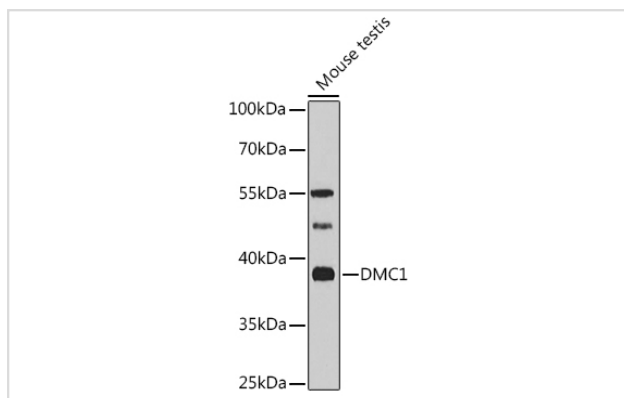
Description

Product Name	DMC1 Polyclonal Antibody
Host Species	Rabbit
Clonality	Polyclonal
Isotype	IgG
Purification	Affinity purification
Applications	WB
Species Reactivity	Human,Mouse,Rat
Immunogen Description	Recombinant fusion protein of human DMC1 (NP_008999.2).
Other Names	DMC1;DMC1H;LIM15;dJ199H16.1
Accession No.	Uniprot:Q14565GeneID:11144
Calculated MW	38kDa
SDS-PAGE MW	38KDa
Formulation	PBS with 0.02% sodium azide,50% glycerol,pH7.3.
Storage	Store at -20°C. Avoid freeze / thaw cycles.

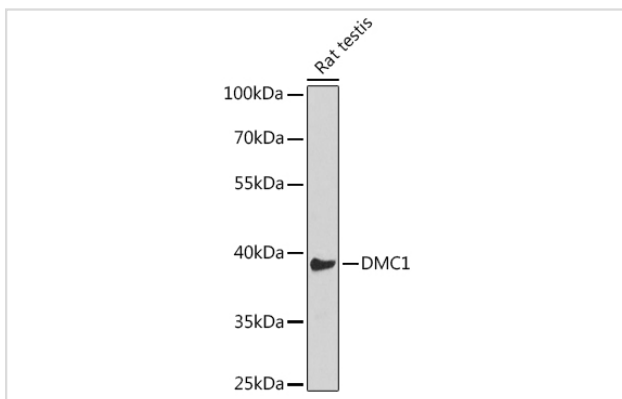
Application Details

WB □ 1:500 - 1:2000

Images



Western blot analysis of extracts of various cell lines, using DMC1 antibody.



Western blot analysis of extracts of Rat testis, using DMC1 antibody.

Background

This gene encodes a member of the superfamily of recombinases (also called DNA strand-exchange proteins). Recombinases are important for repairing double-strand DNA breaks during mitosis and meiosis. This protein, which is evolutionarily conserved, is reported to be essential for meiotic homologous recombination and may thus play an important role in generating diversity of genetic information. Alternative splicing results in multiple transcript variants.

Note: This product is for in vitro research use only and is not intended for use in humans or animals.